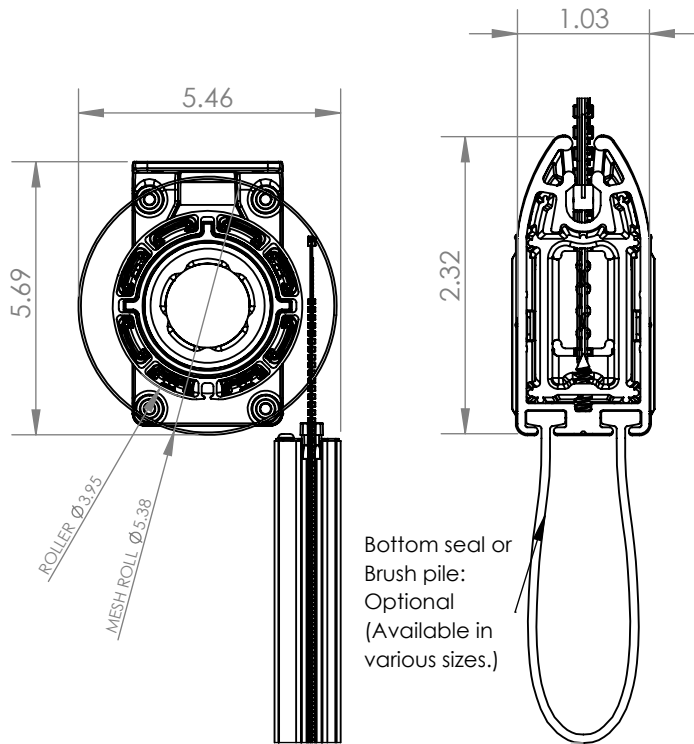
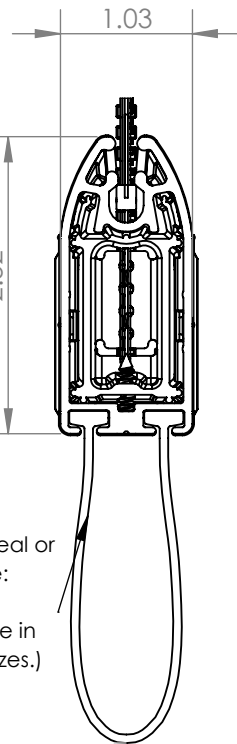


Motorized Retractable Screen

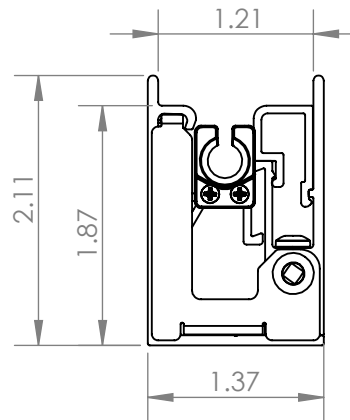
4" Recessed Roller with Sure Fit Track



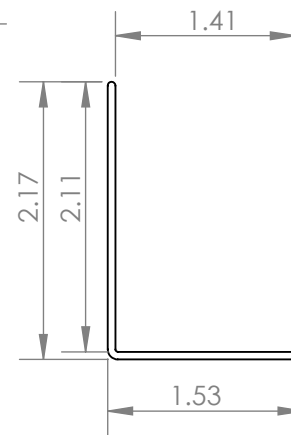
4" RECESSED ROLLER ASSY
SECTION VIEW
SCALE 1:4



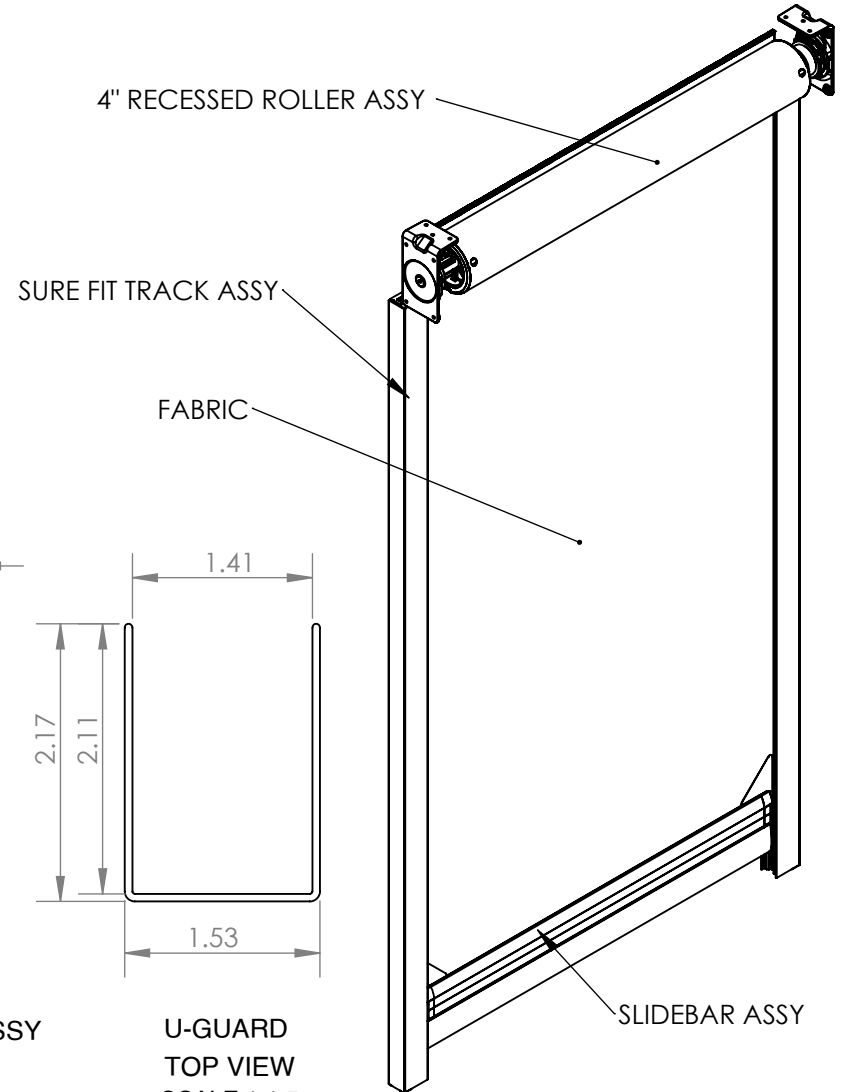
SLIDEBAR ASSY
SECTION VIEW
SCALE 1:1.5



SURE FIT TRACK ASSY
TOP VIEW
SCALE 1:1.5



U-GUARD
TOP VIEW
SCALE 1:1.5



SCALE 1:12

PROPRIETARY AND CONFIDENTIAL

THE INFORMATION CONTAINED IN THIS DRAWING IS THE SOLE PROPERTY OF PHANTOM SCREENS. REPRODUCTION IN PART OR AS A WHOLE WITHOUT THE WRITTEN PERMISSION OF PHANTOM SCREENS IS PROHIBITED.

PHANTOM
SCREENS

UNLESS OTHERWISE SPECIFIED:

DIMENSIONS ARE IN INCHES.
TOLERANCES:
FRACTIONAL $\pm 1/32$
ANGULAR ± 2
TWO PLACE DECIMAL $\pm .013$ "
THREE PLACE DECIMAL $\pm .005$ "

STANDARD TOLERANCES APPLY
UNLESS OTHERWISE SPECIFIED

INTERPRET GEOMETRIC
TOLERANCING PER: ASME Y14.5
THIRD ANGLE PROJECTION

MATERIAL

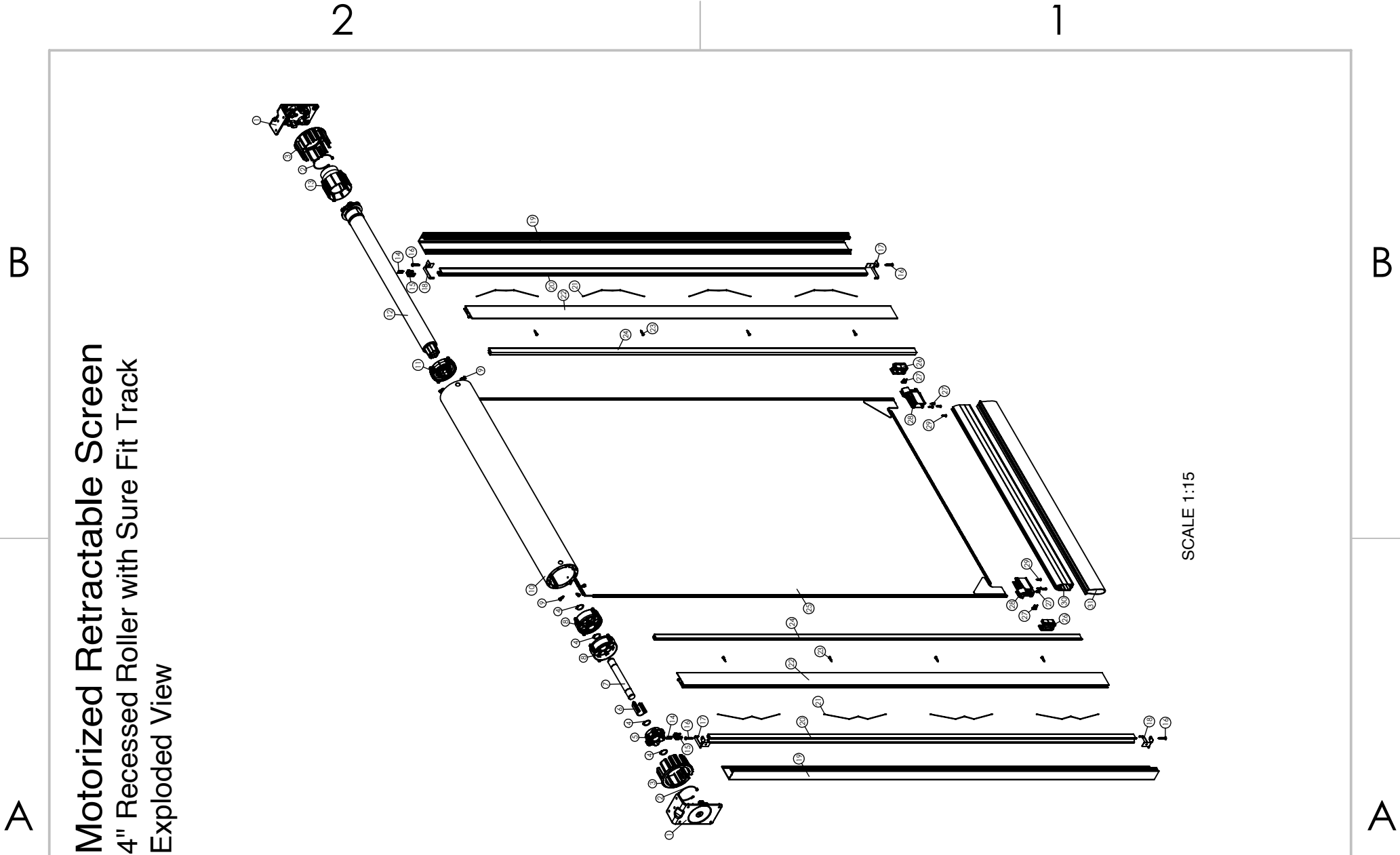
ASSY


| | | |
|-----------|----|------------|
| DRAWN | SA | 2025-12-15 |
| CHECKED | PP | 2025-12-15 |
| ENG APPR. | PP | 2025-12-15 |
| MFG APPR. | | |
| Q.A. | | |

TITLE: Mz2.0, 4" Recessed Roller, Sure Fit Track

| | | |
|------------------|--------------------|-----------------|
| SIZE A | DWG. NO. EPN449 | REV 3 |
| SCALE: 1:12 | WEIGHT: | SHEET 1 OF 14 |

DOCUMENT NO. XXXXX-XX-XXX



| | | | | | | | | | | | | | |
|--|--|---|--|---|--|-----------|----|------------|--|--|--------------------|--|---------------|
| PROPRIETARY AND CONFIDENTIAL | | | | | | | | | | | | | |
| <div></div> <div>PHANTOM SCREENS</div> | | UNLESS OTHERWISE SPECIFIED: DIMENSIONS ARE IN INCHES. TOLERANCES: FRACTIONAL ± 1/32 ANGULAR ± 2 TWO PLACE DECIMAL ± .013" THREE PLACE DECIMAL ± .005" | | STANDARD TOLERANCES APPLY UNLESS OTHERWISE SPECIFIED INTERPRET GEOMETRIC TOLERANCING PER: ASME Y14.5 THIRD ANGLE PROJECTION MATERIAL ASSY | | DRAWN | SA | 2025-12-15 | | TITLE: Mz2.0, 4" Recessed Roller, Sure Fit Track | | | |
| | | | | | | CHECKED | PP | 2025-12-15 | | SIZE A | DWG. NO. EPN449 | | REV 3 |
| | | | | | | ENG APPR. | PP | 2025-12-15 | | | | | |
| | | | | | | MFG APPR. | | | | | | | |
| | | | | | | Q.A. | | | | SCALE: 1:12 | WEIGHT: | | SHEET 2 OF 14 |

A

B

Motorized Retractable Screen
4" Recessed Roller with Sure Fit Track
BOM Table

PROPRIETARY AND CONFIDENTIAL

THE INFORMATION CONTAINED IN THIS DRAWING IS THE SOLE PROPERTY OF PHANTOM SCREENS. REPRODUCTION IN PART OR AS A WHOLE WITHOUT THE WRITTEN PERMISSION OF PHANTOM SCREENS IS PROHIBITED.



PHANTOM

SCREENS

UNLESS OTHERWISE SPECIFIED:

DIMENSIONS ARE IN INCHES.
TOLERANCES:
FRACTIONAL ± 1/32
ANGULAR ± 2
TWO PLACE DECIMAL ± .013"
THREE PLACE DECIMAL ± .005"

STANDARD TOLERANCES APPLY
UNLESS OTHERWISE SPECIFIED

INTERPRET GEOMETRIC
TOLERANCING PER: ASME Y14.5
THIRD ANGLE PROJECTION

MATERIAL

ASSY

DRAWN

SA

2025-12-15

CHECKED

PP

2025-12-15

ENG APPR.

PP

2025-12-15

MFG APPR.

Q.A.

TITLE: Mz2.0, 4" Recessed Roller, Sure Fit Track

SIZE

A

DWG. NO.

EPN449

REV

3

SCALE: 1:12

WEIGHT:

SHEET 3 OF 14

2

1

DOCUMENT NO. XXXXX-XX-XXX

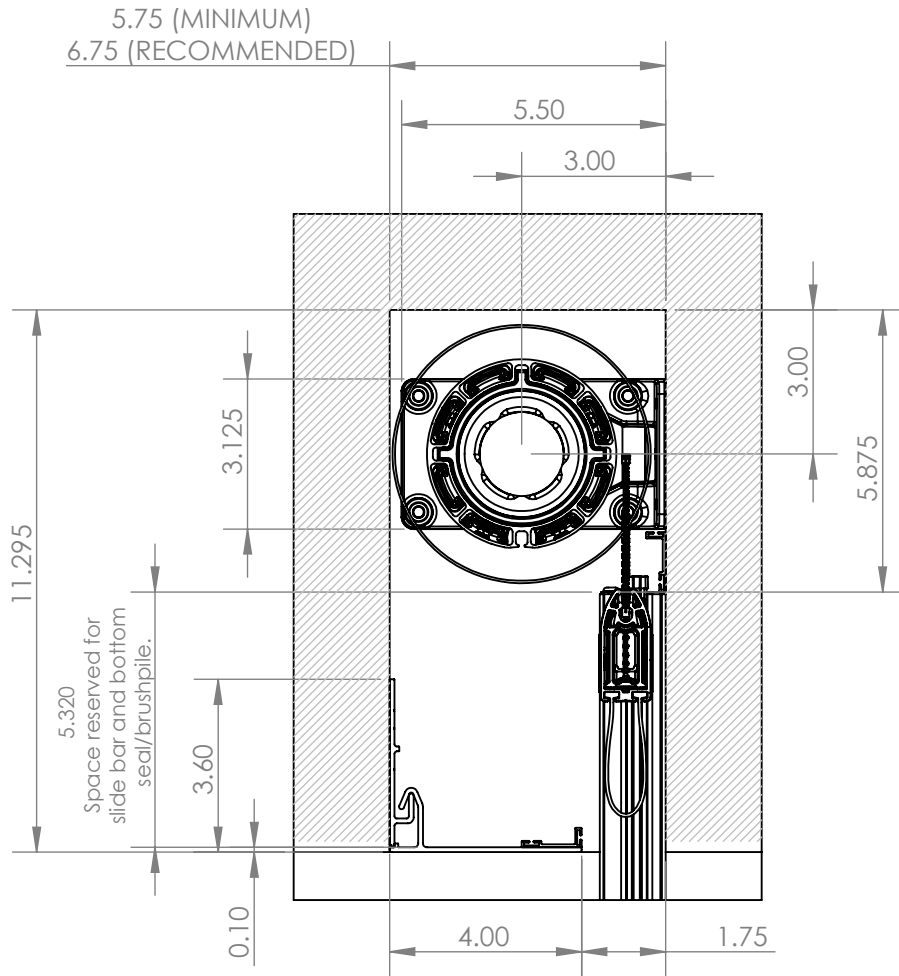
| NO. | DESCRIPTION | QTY |
|-----|--|-----|
| 1 | 48200 Mtz 2.0 Recessed Bracket, 4in | 2 |
| 2 | 46009 Mz Retaining Clip | 2 |
| 3 | 46610 Mz Leveling Ring 4" | 2 |
| 4 | EPN214 External Retaining Ring | 4 |
| 5 | EPN3 Mz2.0 Pivot Head .75 | 1 |
| 6 | EPN211 Mz Pivot Spacer | 1 |
| 7 | EPN7 Mz2.0 Pivot Shaft | 1 |
| 8 | EPN2 Mz2.0 Pivot Bearing | 2 |
| 9 | 71021 #8-0.5" Hex Head Drilling Screw | 8 |
| 10 | 46005 Mz2.0 Roller Bar 4" | 1 |
| 11 | EPN4 Mz2.0 Motor Drive Ring | 1 |
| 12 | 67235 Somfy Motor, S25A2 Maestria RTS | 1 |
| 13 | EPN5 Mz2.0 Motor Encoder Ring | 1 |
| 14 | EPN314 #1-5/8" Rounded Head Screw | 4 |
| 15 | 68155 Sure Fit Entry Guide | 2 |
| 16 | 71039 #10-1" Rounded Head Screw (Unfinished) | 4 |
| 17 | 46854 Sure Fit Lift Stop Left | 2 |
| 18 | 46898 Sure Fit Lift Stop Right | 2 |
| 19 | 46909 Sure Fit U-Channel | 2 |
| 20 | 46844 Sure Fit Inner Track | 2 |
| 21 | 46045 Sure Fit Spring | - |
| 22 | 47014 Sure Fit U-Channel Side | 2 |
| 23 | EPN312 #6-5/8" Rounded Head Screw | - |
| 24 | 47024 Sure Fit Cover | 2 |
| 25 | EPN437 Sure Fit Mesh | 1 |
| 26 | EPN161 Slidebar Endcap Cover | 2 |
| 27 | 71027 #6-1/2" Rounded Head Screw | 8 |
| 28 | EPN160 Slidebar Endcap Main | 2 |
| 29 | 71135 #6-5/8" Flat Head Screw | 4 |
| 30 | EPN199 Slidebar-w-Stopper | 1 |
| 31 | Brush pile or bottom gasket (available in various sizes) | 1 |

A

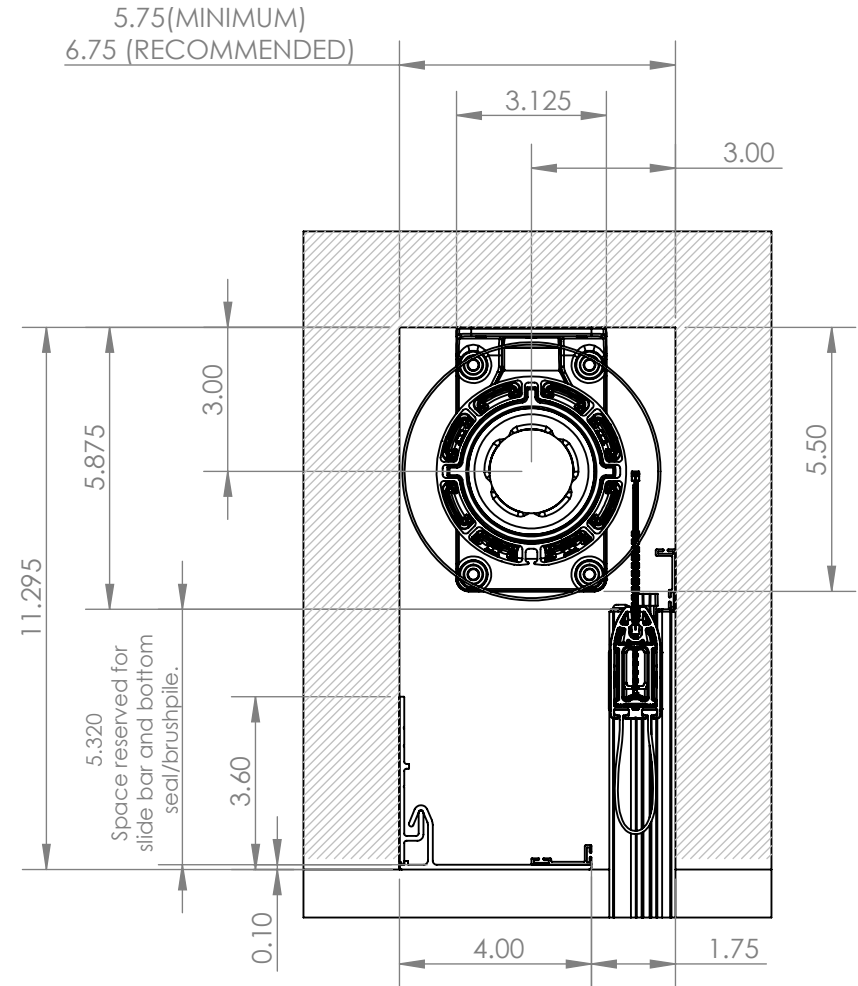
B

Motorized Retractable Screen

4" Recessed Roller with Cavity Cover



HORIZONTALLY MOUNTED
BRACKETS



VERTICALLY MOUNTED
BRACKETS

PROPRIETARY AND CONFIDENTIAL

THE INFORMATION CONTAINED IN THIS DRAWING IS THE SOLE PROPERTY OF PHANTOM SCREENS. REPRODUCTION IN PART OR AS A WHOLE WITHOUT THE WRITTEN PERMISSION OF PHANTOM SCREENS IS PROHIBITED.



UNLESS OTHERWISE SPECIFIED:

DIMENSIONS ARE IN INCHES.
TOLERANCES:
FRACTIONAL $\pm 1/32$
ANGULAR ± 2
TWO PLACE DECIMAL $\pm .013$ "
THREE PLACE DECIMAL $\pm .005$ "

STANDARD TOLERANCES APPLY
UNLESS OTHERWISE SPECIFIED

INTERPRET GEOMETRIC
TOLERANCING PER: ASME Y14.5
THIRD ANGLE PROJECTION

MATERIAL

ASSY

DRAWN

SA

2025-12-15

CHECKED

PP

2025-12-15

ENG APPR.

PP

2025-12-15

MFG APPR.

Q.A.

TITLE: Mz2.0, 4" Recessed Roller, Sure Fit Track

SIZE

A

DWG. NO.

EPN449

REV

3

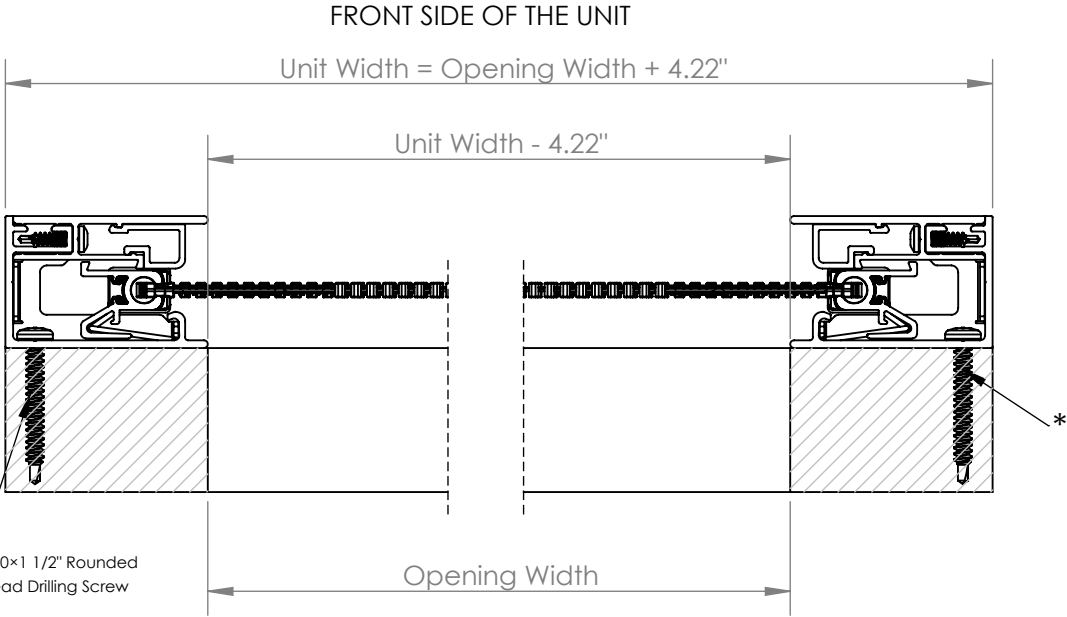
SCALE: 1:12

WEIGHT:

SHEET 4 OF 14

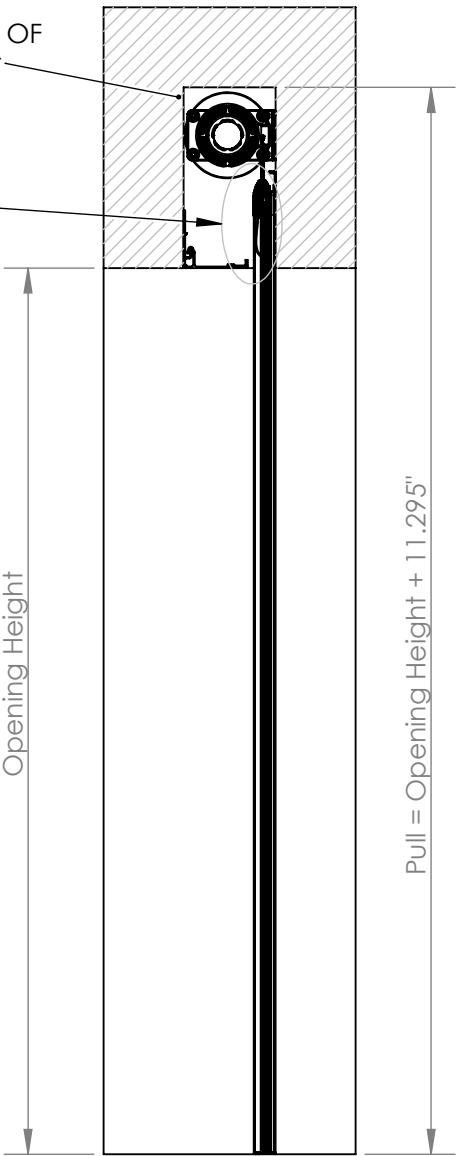
DOCUMENT NO. XXXXX-XX-XXX

Motorized Retractable Screen
4" Recessed Roller with Sure Fit Track
Track Surface-Positioned
Tracks Side Mounted (*)




FRONT SIDE OF THE UNIT

Space reserved for slide bar and bottom seal/brushpile on top, clear of the opening for maximum view.



- Note:**
- Screen unit height can be reduced by cutting the tracks on site.
 - Screen unit width is fixed and must be accurate when ordering.

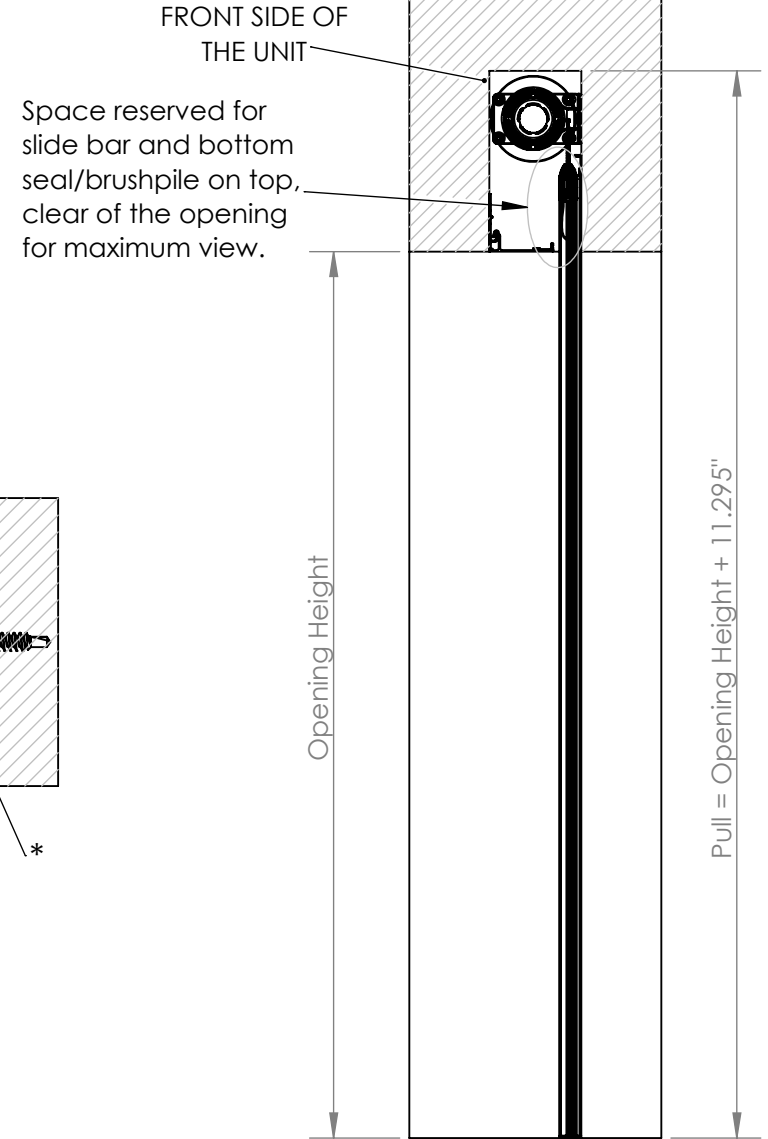
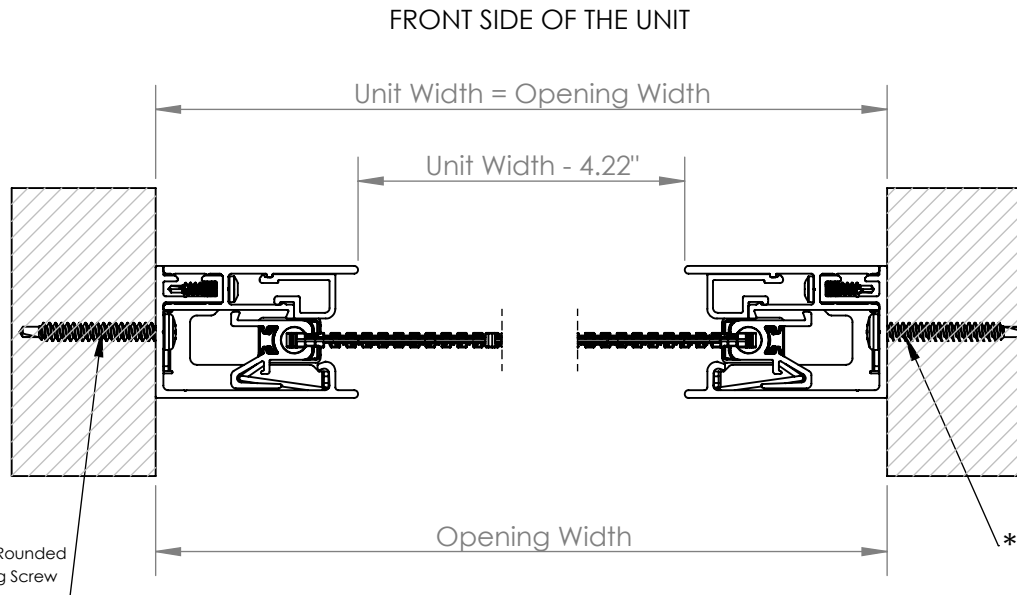
| | | | | | | | | | | | |
|--|--|--|--|--|--|---|--|--|--|--|--|
| PROPRIETARY AND CONFIDENTIAL | | | | | | | | | TITLE: Mz2.0, 4" Recessed Roller, Sure Fit Track | | |
| THE INFORMATION CONTAINED IN THIS DRAWING IS THE SOLE PROPERTY OF PHANTOM SCREENS. REPRODUCTION IN PART OR AS A WHOLE WITHOUT THE WRITTEN PERMISSION OF PHANTOM SCREENS IS PROHIBITED. | | | UNLESS OTHERWISE SPECIFIED: | | | STANDARD TOLERANCES APPLY UNLESS OTHERWISE SPECIFIED | | | SIZE | | |
| | | | | | | | | | A | | |
|  PHANTOM SCREENS | | | DIMENSIONS ARE IN INCHES. TOLERANCES: FRACTIONAL ± 1/32 ANGULAR ± 2 TWO PLACE DECIMAL ± .013" THREE PLACE DECIMAL ± .005" | | | INTERPRET GEOMETRIC TOLERANCING PER: ASME Y14.5 THIRD ANGLE PROJECTION | | | DWG. NO. | | |
| | | | | | | | | | EPN449 | | |
| | | | MATERIAL | | | ASSY | | | REV | | |
| | | | | | | | | | 3 | | |
| | | | | | | | | | SHEET 5 OF 14 | | |
| | | | | | | | | | SCALE: 1:12 | | |
| | | | | | | | | | WEIGHT: | | |
| | | | | | | | | | | | |

Motorized Retractable Screen

4" Recessed Roller with Sure Fit Track

Track In-Jamb Positioned

Tracks Back Mounted (*)



Note:

- Screen unit height can be reduced by cutting the tracks on site.
- Screen unit width is fixed and must be accurate when ordering.

PROPRIETARY AND CONFIDENTIAL

THE INFORMATION CONTAINED IN THIS DRAWING IS THE SOLE PROPERTY OF PHANTOM SCREENS. REPRODUCTION IN PART OR AS A WHOLE WITHOUT THE WRITTEN PERMISSION OF PHANTOM SCREENS IS PROHIBITED.



PHANTOM
SCREENS

UNLESS OTHERWISE SPECIFIED:

DIMENSIONS ARE IN INCHES.
TOLERANCES:
FRACTIONAL $\pm 1/32$
ANGULAR ± 2
TWO PLACE DECIMAL $\pm .013$ "
THREE PLACE DECIMAL $\pm .005$ "

STANDARD TOLERANCES APPLY UNLESS OTHERWISE SPECIFIED

INTERPRET GEOMETRIC TOLERANCING PER: ASME Y14.5
THIRD ANGLE PROJECTION

MATERIAL

ASSY

DRAWN

SA

2025-12-15

CHECKED

PP

2025-12-15

ENG APPR.

PP

2025-12-15

MFG APPR.

Q.A.

TITLE: Mz2.0, 4" Recessed Roller, Sure Fit Track

SIZE

A

DWG. NO.

EPN449

REV

3

SCALE: 1:12

WEIGHT:

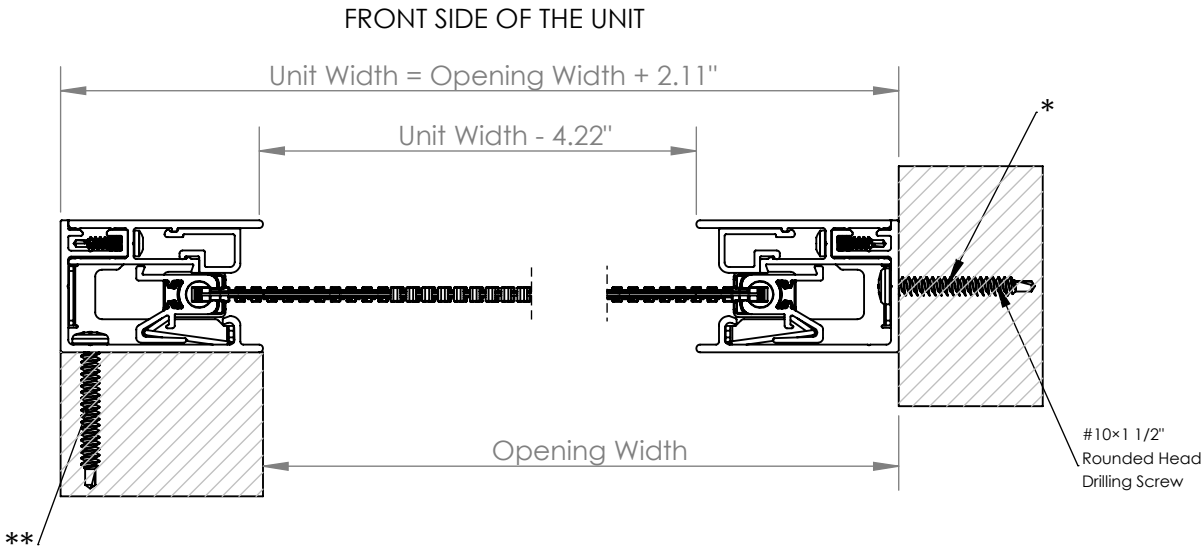
SHEET 6 OF 14

DOCUMENT NO. XXXXX-XX-XXX

Motorized Retractable Screen
4" Recessed Roller with Sure Fit Track
Tracks In-Jamb and Surface Positioned
Tracks Back (*) and Side (**) Mounted

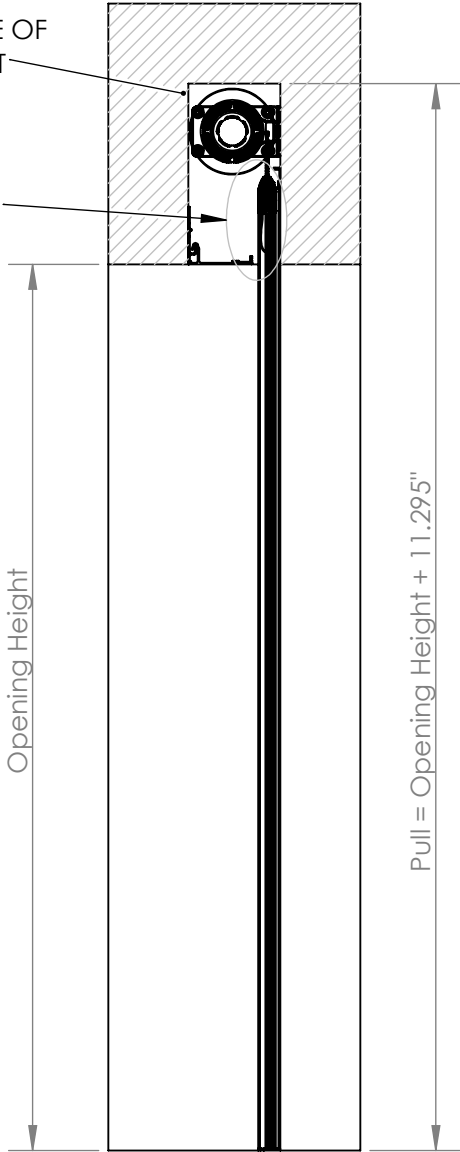
B

B



FRONT SIDE OF THE UNIT


Space reserved for slide bar and bottom seal/brushpile on top, clear of the opening for maximum view.



A

A

- Note:**
- Screen unit height can be reduced by cutting the tracks on site.
 - Screen unit width is fixed and must be accurate when ordering.

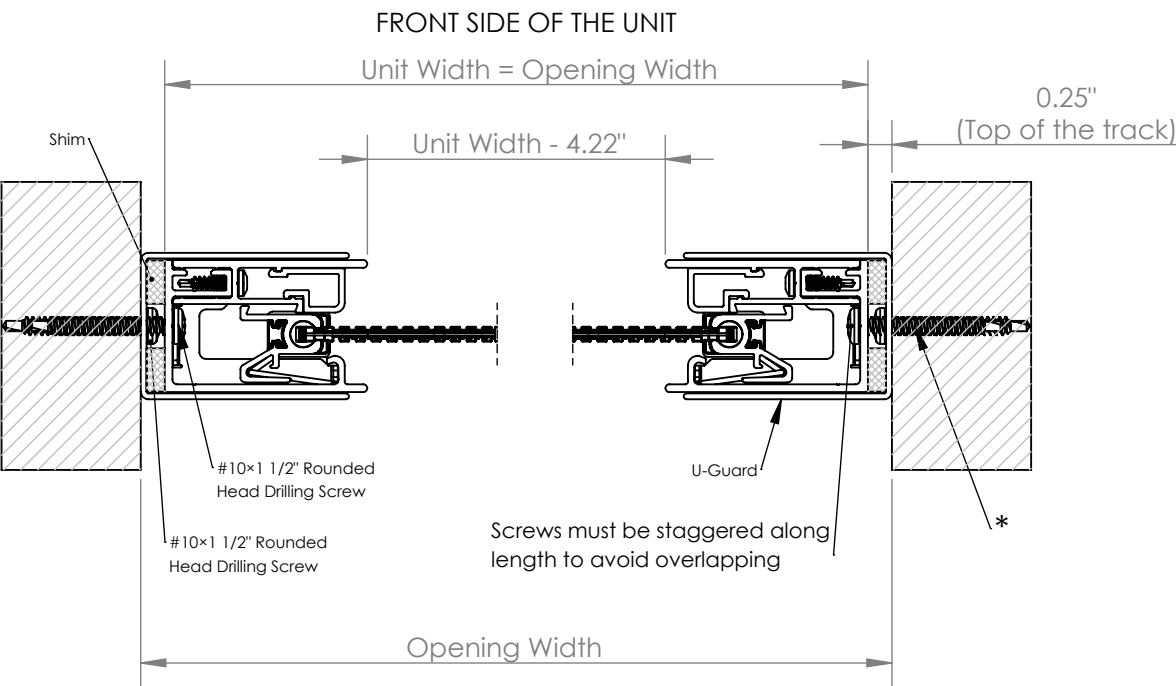
| | | | | | | | | | | | |
|--|--|--|--|--|--|---|--|--|--|----------|-----|
| PROPRIETARY AND CONFIDENTIAL | | | | | | | | | TITLE: Mz2.0, 4" Recessed Roller, Sure Fit Track | | |
| <div>THE INFORMATION CONTAINED IN THIS DRAWING IS THE SOLE PROPERTY OF PHANTOM SCREENS. REPRODUCTION IN PART OR AS A WHOLE WITHOUT THE WRITTEN PERMISSION OF PHANTOM SCREENS IS PROHIBITED.</div> <div> PHANTOM SCREENS</div> | | | UNLESS OTHERWISE SPECIFIED: | | | STANDARD TOLERANCES APPLY UNLESS OTHERWISE SPECIFIED | | | SIZE | DWG. NO. | REV |
| | | | DIMENSIONS ARE IN INCHES. TOLERANCES: FRACTIONAL ± 1/32 ANGULAR ± 2 TWO PLACE DECIMAL ± .013" THREE PLACE DECIMAL ± .005" | | | INTERPRET GEOMETRIC TOLERANCING PER: ASME Y14.5 THIRD ANGLE PROJECTION | | | A | EPN449 | 3 |
| | | | MATERIAL | | | DRAWN | | | SCALE: 1:12 | | |
| | | | ASSY | | | SA | | | WEIGHT: | | |
| | | | | | | 2025-12-15 | | | SHEET 7 OF 14 | | |
| | | | | | | 2025-12-15 | | | | | |
| | | | | | | 2025-12-15 | | | | | |
| | | | | | | MFG APPR. | | | | | |
| | | | | | | Q.A. | | | | | |

2

1

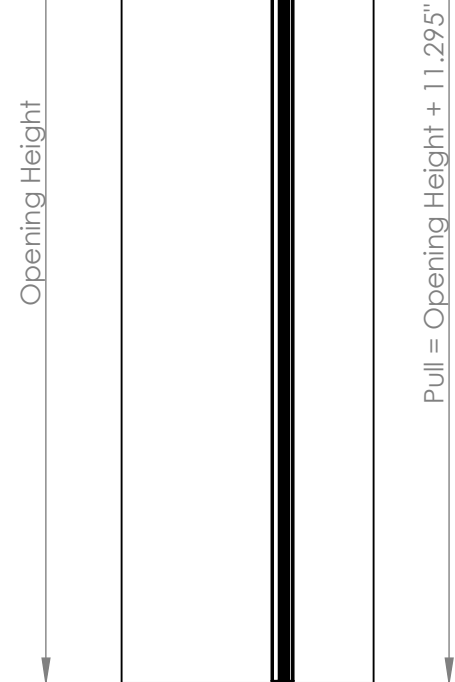
Motorized Retractable Screen
4" Recessed Roller with Sure Fit Track
U-Guard Used for Adjustment on Unparallel Posts
Tracks In-Jamb Positioned
Tracks Back Mounted (*)

B



FRONT SIDE OF THE UNIT

Space reserved for slide bar and bottom seal/brushpile on top, clear of the opening for maximum view.




B

A

- Note:**
- Screen unit height can be reduced by cutting the tracks on site.
 - Screen unit width is fixed and must be accurate when ordering.

A

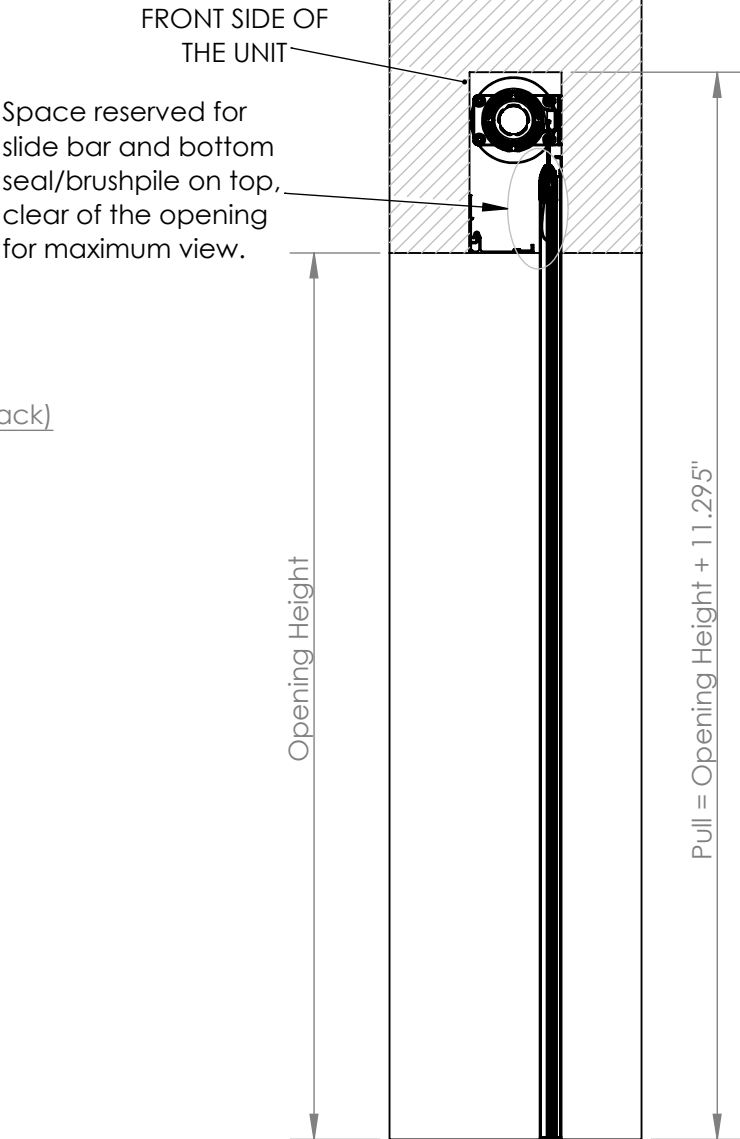
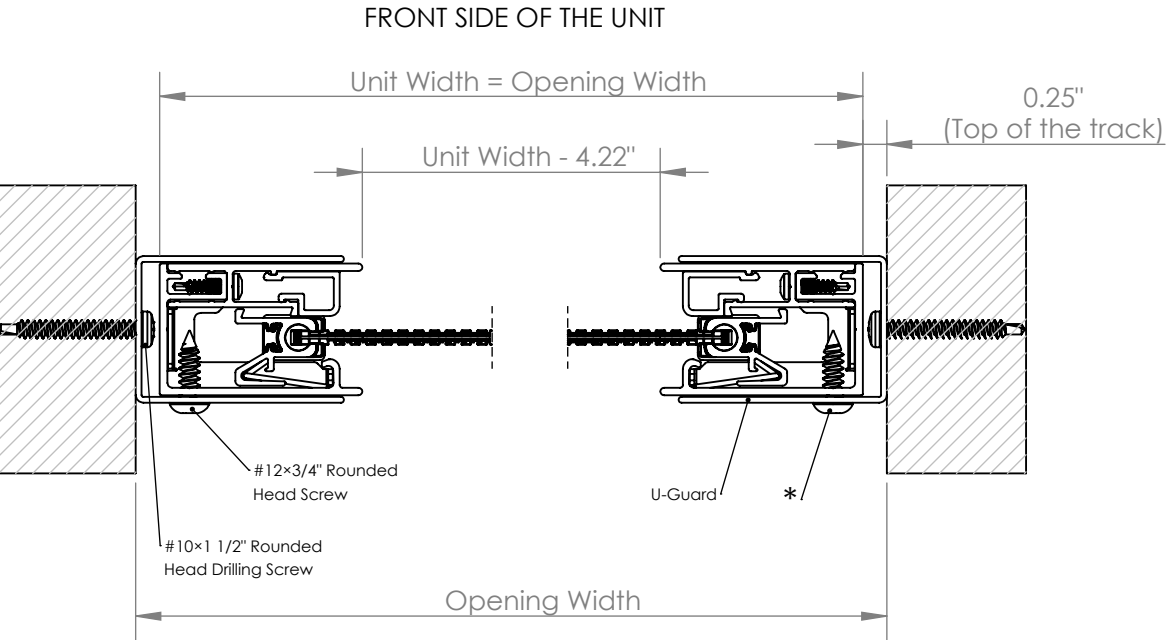
| | | | | | | | | | | | |
|--|--|--|--|--|--|---|--|--|--|----------|-----|
| PROPRIETARY AND CONFIDENTIAL | | | UNLESS OTHERWISE SPECIFIED: | | | STANDARD TOLERANCES APPLY UNLESS OTHERWISE SPECIFIED | | | TITLE: Mz2.0, 4" Recessed Roller, Sure Fit Track | | |
|  PHANTOM SCREENS | | | DIMENSIONS ARE IN INCHES. TOLERANCES: FRACTIONAL $\pm 1/32$ ANGULAR ± 2 TWO PLACE DECIMAL $\pm .013$ " THREE PLACE DECIMAL $\pm .005$ " | | | INTERPRET GEOMETRIC TOLERANCING PER: ASME Y14.5 THIRD ANGLE PROJECTION | | | SIZE | DWG. NO. | REV |
| | | | | | | | | | A | EPN449 | 3 |
| | | | | | | | | | | | |
| | | | | | | | | | | | |
| | | | MATERIAL | | | DRAWN | | | SCALE: 1:12 | | |
| | | | ASSY | | | SA | | | WEIGHT: | | |
| | | | | | | CHECKED | | | SHEET 8 OF 14 | | |
| | | | | | | ENG APPR. | | | | | |
| | | | | | | MFG APPR. | | | | | |
| | | | | | | Q.A. | | | | | |

2

1

Motorized Retractable Screen
4" Recessed Roller with Sure Fit Track
U-Guard Used for Adjustment on Unparallel Posts
Tracks In-Jamb Positioned
Tracks Side Mounted (*)

B




B

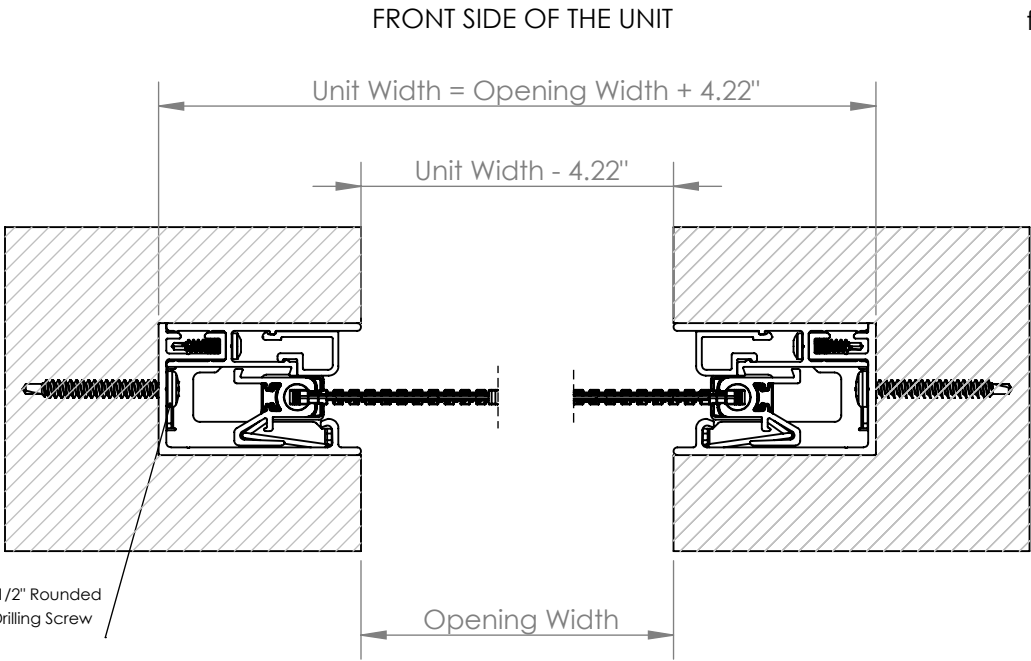
A

- Note:**
- Screen unit height can be reduced by cutting the tracks on site.
 - Screen unit width is fixed and must be accurate when ordering.

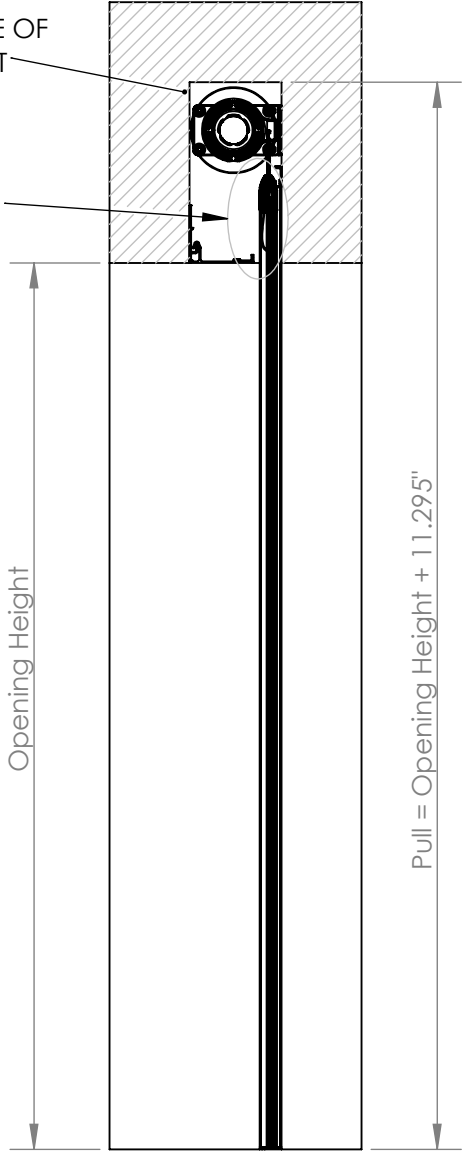
A

| | | | | | | | | | | | |
|--|---|--|--|-----------|--|--|-----------------|--|---------------|--|--|
| PROPRIETARY AND CONFIDENTIAL | | | | | | TITLE: Mz2.0, 4" Recessed Roller, Sure Fit Track | | | | | |
| THE INFORMATION CONTAINED IN THIS DRAWING IS THE SOLE PROPERTY OF PHANTOM SCREENS. REPRODUCTION IN PART OR AS A WHOLE WITHOUT THE WRITTEN PERMISSION OF PHANTOM SCREENS IS PROHIBITED. | | | UNLESS OTHERWISE SPECIFIED: | | | DRAWN | | | | | |
| | | | DIMENSIONS ARE IN INCHES. TOLERANCES: FRACTIONAL ± 1/32 ANGULAR ± 2 TWO PLACE DECIMAL ± .013" THREE PLACE DECIMAL ± .005" | | | SA | | | | | |
|  PHANTOM S C R E E N S | STANDARD TOLERANCES APPLY UNLESS OTHERWISE SPECIFIED | | | CHECKED | | | 2025-12-15 | | | | |
| | INTERPRET GEOMETRIC TOLERANCING PER: ASME Y14.5 THIRD ANGLE PROJECTION | | | ENG APPR. | | | 2025-12-15 | | | | |
| | MATERIAL | | | MFG APPR. | | | SIZE A | | | | |
| | ASSY | | | Q.A. | | | DWG. NO. EPN449 | | | | |
| | | | | | | | | | REV 3 | | |
| | | | | | | | | | SCALE: 1:12 | | |
| | | | | | | | | | WEIGHT: | | |
| | | | | | | | | | SHEET 9 OF 14 | | |

Motorized Retractable Screen
4" Recessed Roller with Sure Fit Track
Tracks Recessed-Mounted



Space reserved for slide bar and bottom seal/brushpile on top, clear of the opening for maximum view.



- Note:**
- Screen unit height can be reduced by cutting the tracks on site.
 - Screen unit width is fixed and must be accurate when ordering.

| | | | | | | | | |
|--|--|--|--|--|--|--|----------|-----|
| PROPRIETARY AND CONFIDENTIAL | | | | | | TITLE: Mz2.0, 4" Recessed Roller, Sure Fit Track | | |
| THE INFORMATION CONTAINED IN THIS DRAWING IS THE SOLE PROPERTY OF PHANTOM SCREENS. REPRODUCTION IN PART OR AS A WHOLE WITHOUT THE WRITTEN PERMISSION OF PHANTOM SCREENS IS PROHIBITED. | | | UNLESS OTHERWISE SPECIFIED: | | | SIZE | DWG. NO. | REV |
| | | | DIMENSIONS ARE IN INCHES. | | | A | EPN449 | 3 |
| PHANTOM SCREENS | | | STANDARD TOLERANCES APPLY UNLESS OTHERWISE SPECIFIED | | | SCALE: 1:12 | | |
| | | | INTERPRET GEOMETRIC TOLERANCING PER: ASME Y14.5 THIRD ANGLE PROJECTION | | | WEIGHT: | | |
| MATERIAL | | | DRAWN | | | SHEET 10 OF 14 | | |
| | | | SA | | | | | |
| ASSY | | | CHECKED | | | | | |
| | | | ENG APPR. | | | | | |
| | | | MFG APPR. | | | | | |
| | | | Q.A. | | | | | |

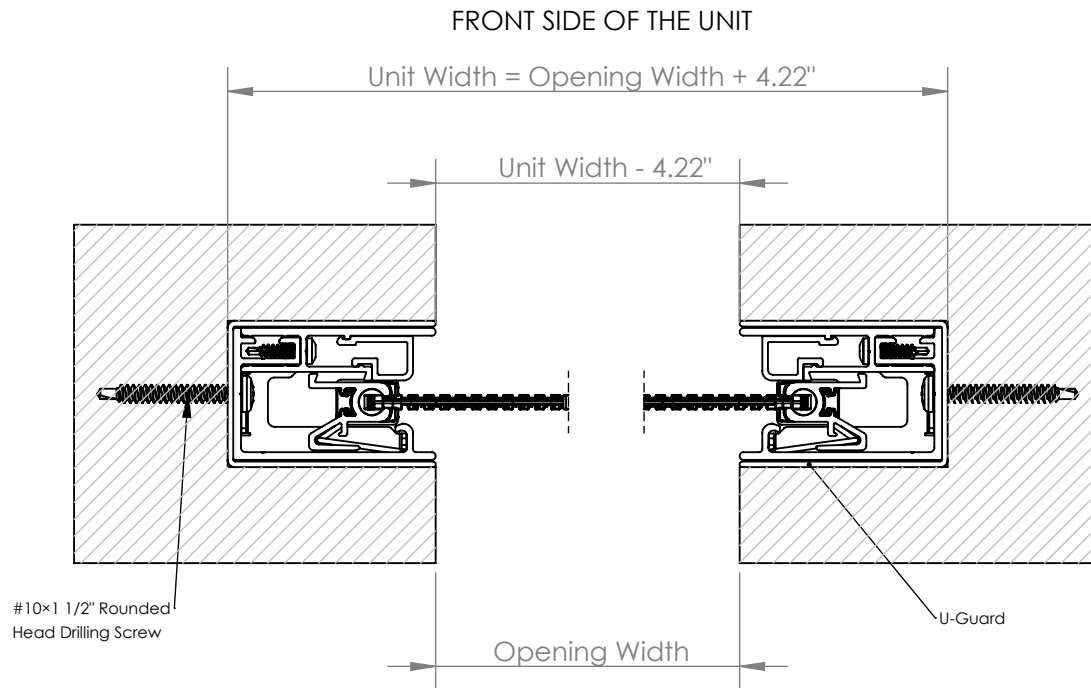
Motorized Retractable Screen

4" Recessed Roller with Sure Fit Track

Stucco Build-Up Post with U-Guard

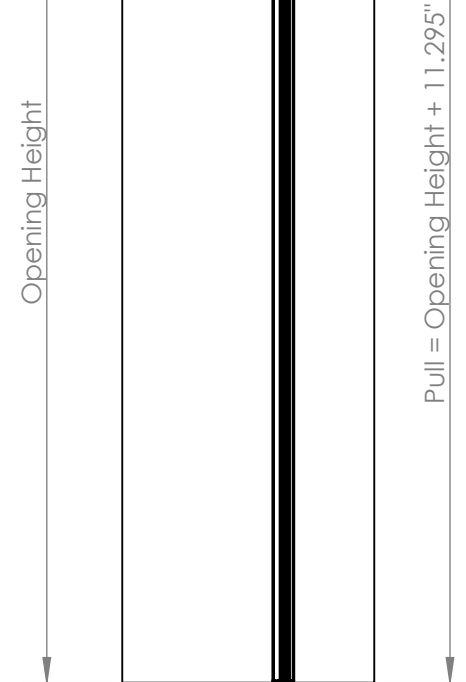
(Build-Up Procedure on Page 12)

Tracks Recessed-Mounted



FRONT SIDE OF THE UNIT

Space reserved for slide bar and bottom seal/brushpile on top, clear of the opening for maximum view.



Note:

- Screen unit height can be reduced by cutting the tracks on site.
- Screen unit width is fixed and must be accurate when ordering.

PROPRIETARY AND CONFIDENTIAL

THE INFORMATION CONTAINED IN THIS DRAWING IS THE SOLE PROPERTY OF PHANTOM SCREENS. REPRODUCTION IN PART OR AS A WHOLE WITHOUT THE WRITTEN PERMISSION OF PHANTOM SCREENS IS PROHIBITED.



PHANTOM
SCREENS

UNLESS OTHERWISE SPECIFIED:

DIMENSIONS ARE IN INCHES.
TOLERANCES:
FRACTIONAL $\pm 1/32$
ANGULAR ± 2
TWO PLACE DECIMAL $\pm .013$
THREE PLACE DECIMAL $\pm .005$

STANDARD TOLERANCES APPLY UNLESS OTHERWISE SPECIFIED

INTERPRET GEOMETRIC TOLERANCING PER: ASME Y14.5
THIRD ANGLE PROJECTION

MATERIAL

ASSY

DRAWN

CHECKED

ENG APPR.

MFG APPR.

Q.A.

SA

PP

PP

2025-12-15

2025-12-15

2025-12-15

TITLE: Mz2.0, 4" Recessed Roller, Sure Fit Track

SIZE

A

DWG. NO.

EPN449

REV

3

SCALE: 1:12

WEIGHT:

SHEET 11 OF 14

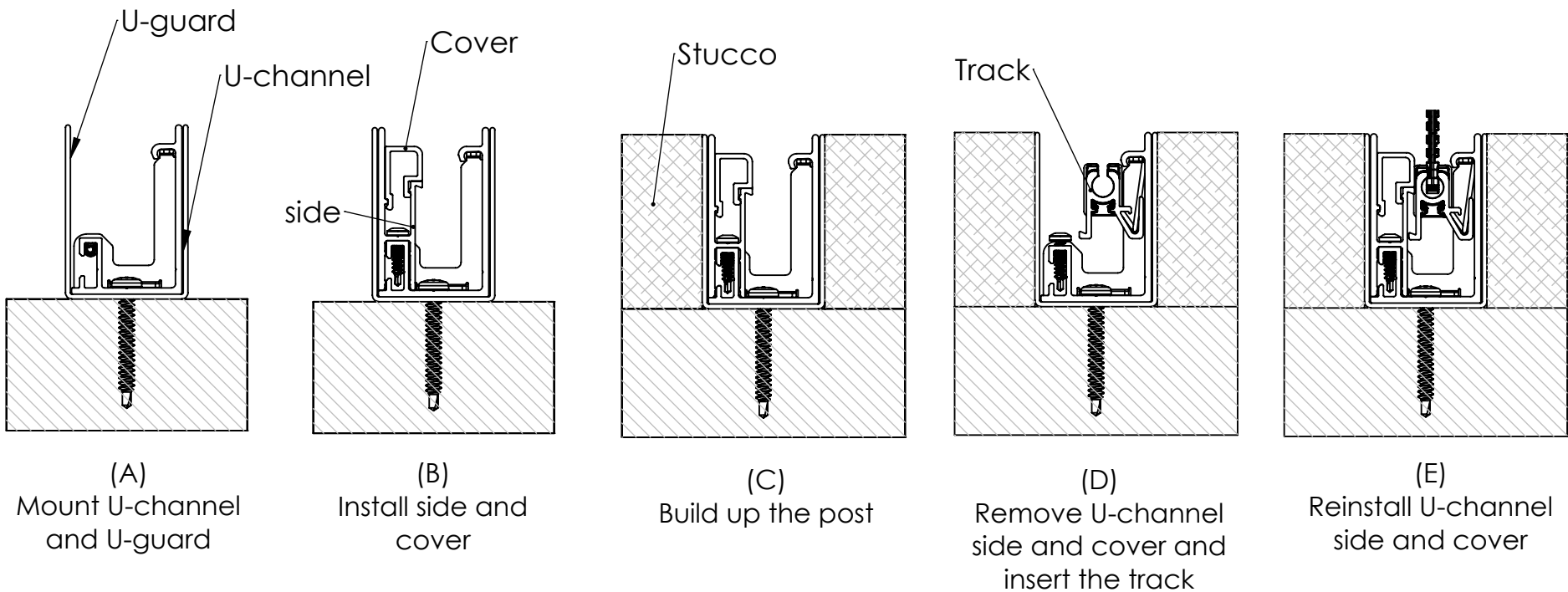
DOCUMENT NO. XXXXX-XX-XXX

Motorized Retractable Screen
4" Recessed Roller with Sure Fit Track
Stucco Build-Up Post with U-Guard
Tracks Recessed-Mounted

B


B

Track Installation Procedure with Stucco Build-up Posts



A

A

| | | | | | | | | | |
|--|--|--|--|---|--|------------|--|--|--|
| PROPRIETARY AND CONFIDENTIAL | | | | | | | | | |
| THE INFORMATION CONTAINED IN THIS DRAWING IS THE SOLE PROPERTY OF PHANTOM SCREENS. REPRODUCTION IN PART OR AS A WHOLE WITHOUT THE WRITTEN PERMISSION OF PHANTOM SCREENS IS PROHIBITED. | | UNLESS OTHERWISE SPECIFIED: | | STANDARD TOLERANCES APPLY UNLESS OTHERWISE SPECIFIED | | DRAWN | | SA | |
|  PHANTOM SCREENS | | DIMENSIONS ARE IN INCHES. TOLERANCES: FRACTIONAL $\pm 1/32$ ANGULAR ± 2 TWO PLACE DECIMAL $\pm .013$ " THREE PLACE DECIMAL $\pm .005$ " | | INTERPRET GEOMETRIC TOLERANCING PER: ASME Y14.5 THIRD ANGLE PROJECTION | | 2025-12-15 | | TITLE: Mz2.0, 4" Recessed Roller, Sure Fit Track | |
| | | | | | | CHECKED | | PP | |
| | | | | | | ENG APPR. | | PP | |
| | | | | | | MFG APPR. | | | |
| | | MATERIAL | | ASSY | | Q.A. | | | |
| | | | | | | | | SCALE: 1:12 | |
| | | | | | | | | WEIGHT: | |
| | | | | | | | | REV | |
| | | | | | | | | 3 | |
| | | | | | | | | SHEET 12 OF 14 | |

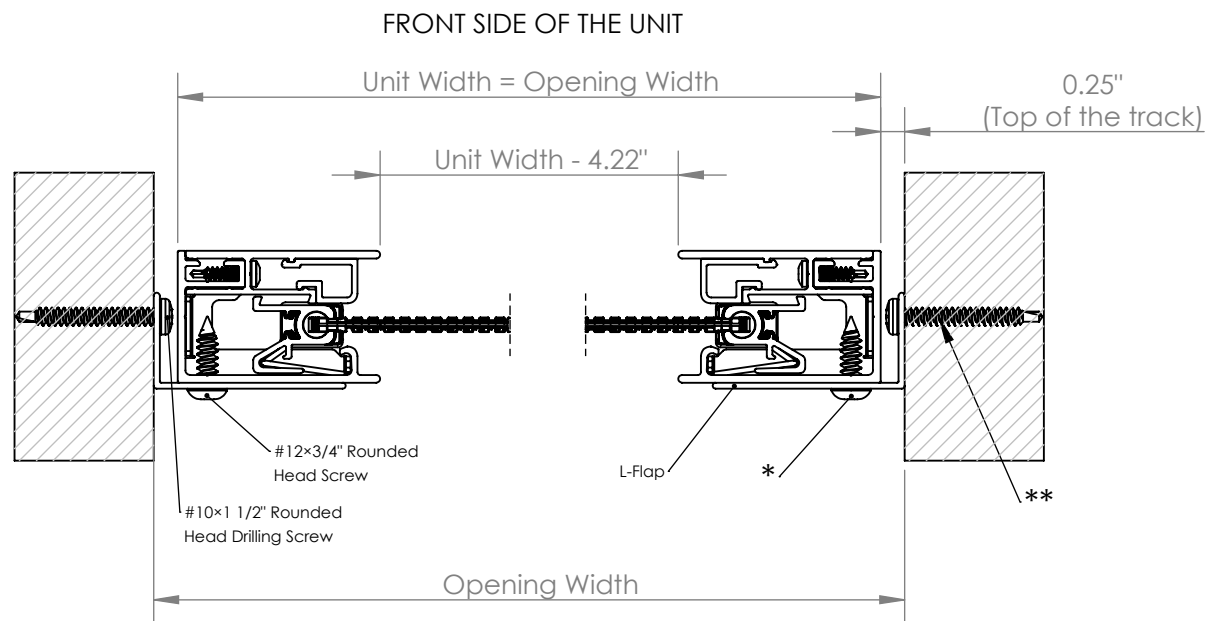
2

1

Motorized Retractable Screen
4" Recessed Roller with Sure Fit Track
L-Flap Used for Adjustment on Unparallel Posts
Tracks In-Jamb Positioned
Tracks Side Mounted (*)
L-Flap Mounted behind the Track (**)

B

B



FRONT SIDE OF THE UNIT

Space reserved for slide bar and bottom seal/brushpile on top, clear of the opening for maximum view.

Opening Height

Pull = Opening Height + 11.295"

Note:

- Screen unit height can be reduced by cutting the tracks on site.
- Screen unit width is fixed and must be accurate when ordering.

A

PROPRIETARY AND CONFIDENTIAL

THE INFORMATION CONTAINED IN THIS DRAWING IS THE SOLE PROPERTY OF PHANTOM SCREENS. REPRODUCTION IN PART OR AS A WHOLE WITHOUT THE WRITTEN PERMISSION OF PHANTOM SCREENS IS PROHIBITED.



UNLESS OTHERWISE SPECIFIED:

DIMENSIONS ARE IN INCHES.
TOLERANCES:
FRACTIONAL $\pm 1/32$
ANGULAR ± 2
TWO PLACE DECIMAL $\pm .013$ "
THREE PLACE DECIMAL $\pm .005$ "

STANDARD TOLERANCES APPLY UNLESS OTHERWISE SPECIFIED

INTERPRET GEOMETRIC TOLERANCING PER: ASME Y14.5
THIRD ANGLE PROJECTION

MATERIAL

ASSY

DRAWN

SA

2025-12-15

CHECKED

PP

2025-12-15

ENG APPR.

PP

2025-12-15

MFG APPR.

Q.A.

TITLE: Mz2.0, 4" Recessed Roller, Sure Fit Track

SIZE

A

DWG. NO.

EPN449

REV

3

SCALE: 1:12

WEIGHT:

SHEET 13 OF 14

DOCUMENT NO. XXXXX-XX-XXX

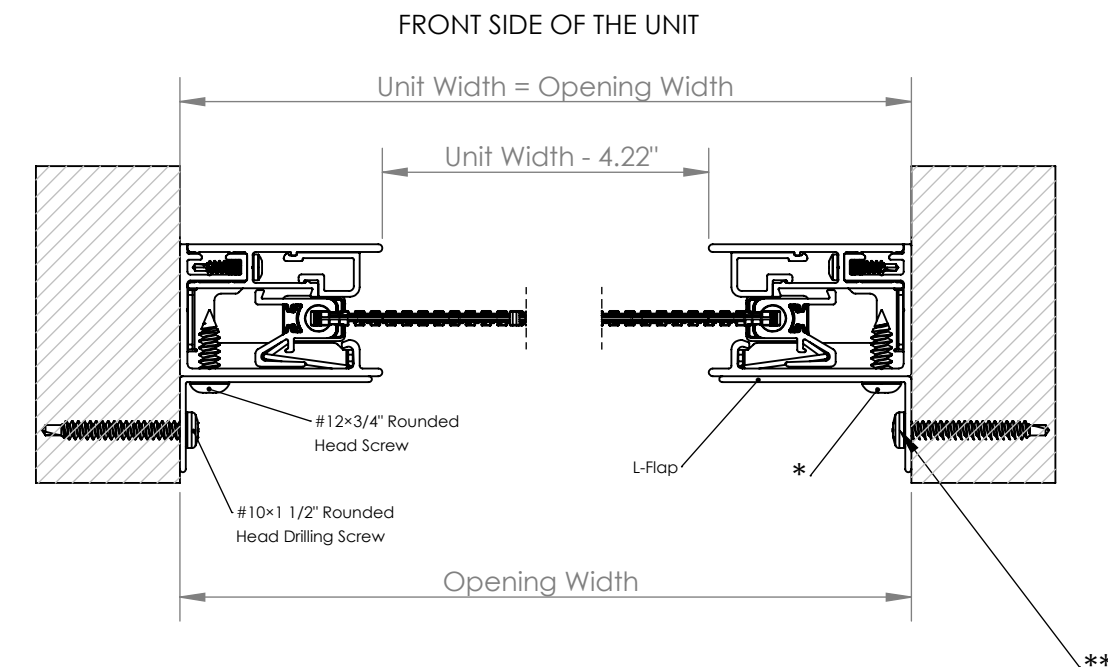
2

1

Motorized Retractable Screen
4" Recessed Roller with Sure Fit Track
L-Flap Used for Adjustment on Unparallel Posts
Tracks In-Jamb Positioned
Tracks Side Mounted (*)
L-Flap Mounted on the Side of the Track (**)

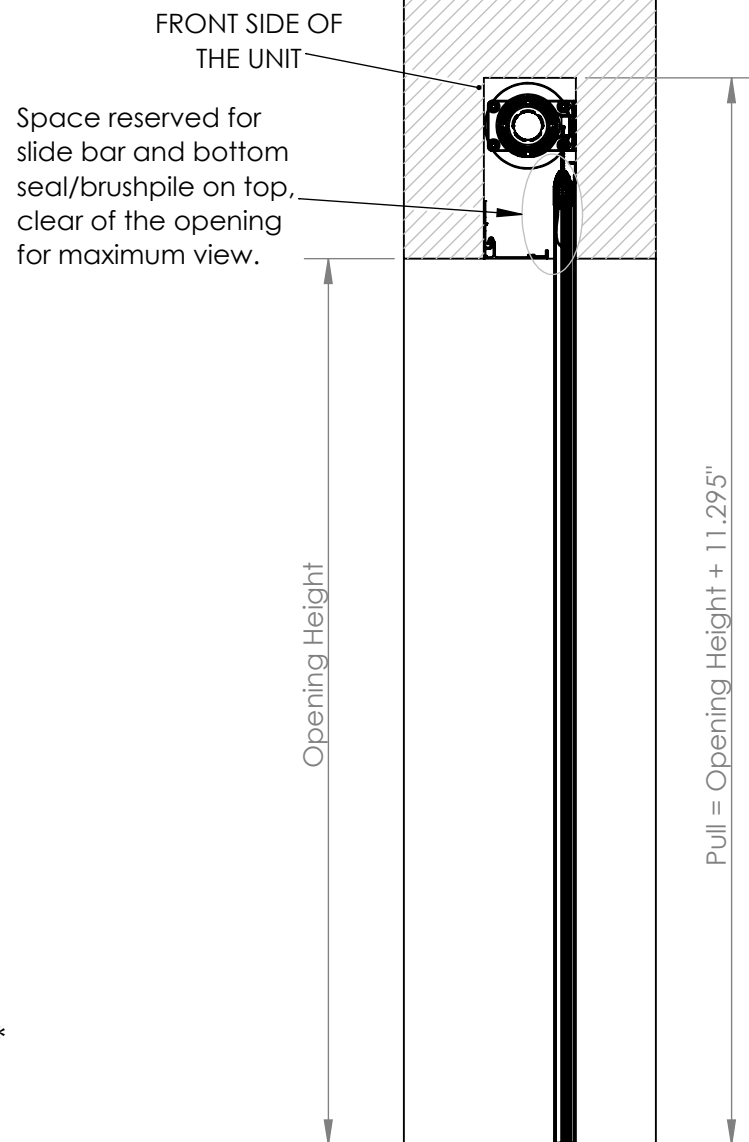
B

B



Note:

- Screen unit height can be reduced by cutting the tracks on site.
- Screen unit width is fixed and must be accurate when ordering.



A

| | | | | | | | | |
|--|--|--|--|--|--|--|----------|----------------|
| PROPRIETARY AND CONFIDENTIAL | | | | | | TITLE: Mz2.0, 4" Recessed Roller, Sure Fit Track | | |
| THE INFORMATION CONTAINED IN THIS DRAWING IS THE SOLE PROPERTY OF PHANTOM SCREENS. REPRODUCTION IN PART OR AS A WHOLE WITHOUT THE WRITTEN PERMISSION OF PHANTOM SCREENS IS PROHIBITED. | | | | | | SIZE | DWG. NO. | REV |
| | | | | | | A | EPN449 | 3 |
| UNLESS OTHERWISE SPECIFIED: | | | | | | SCALE: 1:12 | WEIGHT: | SHEET 14 OF 14 |
| DIMENSIONS ARE IN INCHES. TOLERANCES: FRACTIONAL ± 1/32 ANGULAR ± 2 TWO PLACE DECIMAL ± .013" THREE PLACE DECIMAL ± .005" | | | | | | | | |
| STANDARD TOLERANCES APPLY UNLESS OTHERWISE SPECIFIED | | | | | | | | |
| INTERPRET GEOMETRIC TOLERANCING PER: ASME Y14.5 THIRD ANGLE PROJECTION | | | | | | | | |
| MATERIAL | | | | | | | | |
| ASSY | | | | | | | | |
| DRAWN | | | | | | | | |
| SA | | | | | | | | |
| 2025-12-15 | | | | | | | | |
| CHECKED | | | | | | | | |
| PP | | | | | | | | |
| 2025-12-15 | | | | | | | | |
| ENG APPR. | | | | | | | | |
| PP | | | | | | | | |
| 2025-12-15 | | | | | | | | |
| MFG APPR. | | | | | | | | |
| Q.A. | | | | | | | | |

