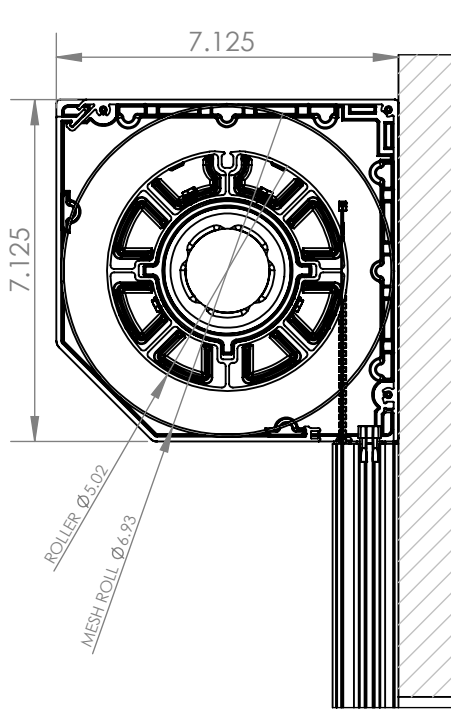
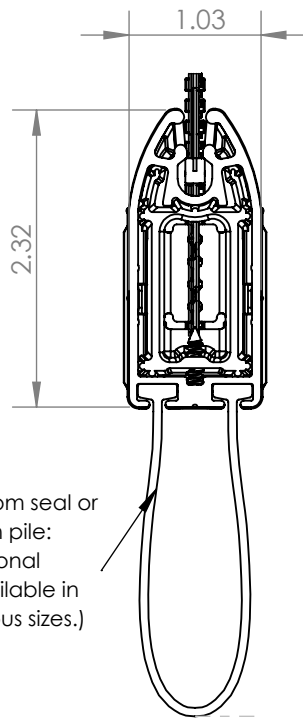


Motorized Retractable Screen

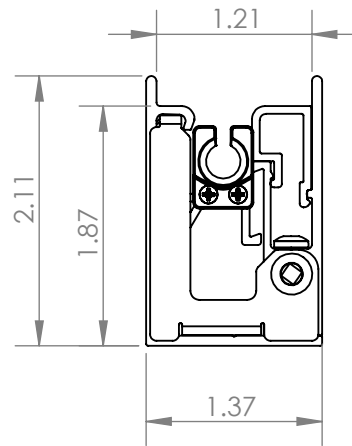
7.125" Housing with Sure Fit Track



7.125" HOUSING ASSY
SECTION VIEW
SCALE 1:4



SLIDEBAR ASSY
SECTION VIEW
SCALE 1:1.5



SURE FIT TRACK ASSY
TOP VIEW
SCALE 1:1.5

7.125" HOUSING ASSY

SURE FIT TRACK ASSY

FABRIC

SLIDEBAR ASSY

SCALE 1:12

PROPRIETARY AND CONFIDENTIAL

THE INFORMATION CONTAINED IN THIS DRAWING IS THE SOLE PROPERTY OF PHANTOM SCREENS. REPRODUCTION IN PART OR AS A WHOLE WITHOUT THE WRITTEN PERMISSION OF PHANTOM SCREENS IS PROHIBITED.

PHANTOM
SCREENS

UNLESS OTHERWISE SPECIFIED:

DIMENSIONS ARE IN INCHES.
TOLERANCES:
FRACTIONAL $\pm 1/32$
ANGULAR ± 2
TWO PLACE DECIMAL $\pm .013$ "
THREE PLACE DECIMAL $\pm .005$ "

STANDARD TOLERANCES APPLY
UNLESS OTHERWISE SPECIFIED

INTERPRET GEOMETRIC
TOLERANCING PER: ASME Y14.5
THIRD ANGLE PROJECTION

MATERIAL

ASSY

DRAWN

SA

2025-12-01

CHECKED

PP

2025-12-01

ENG APPR.

PP

2025-12-01

MFG APPR.

Q.A.

TITLE: Mz2.0, 7.125 Housing, Sure Fit Track

SIZE

A

DWG. NO.

EPN448

REV

3

SCALE: 1:12

WEIGHT:

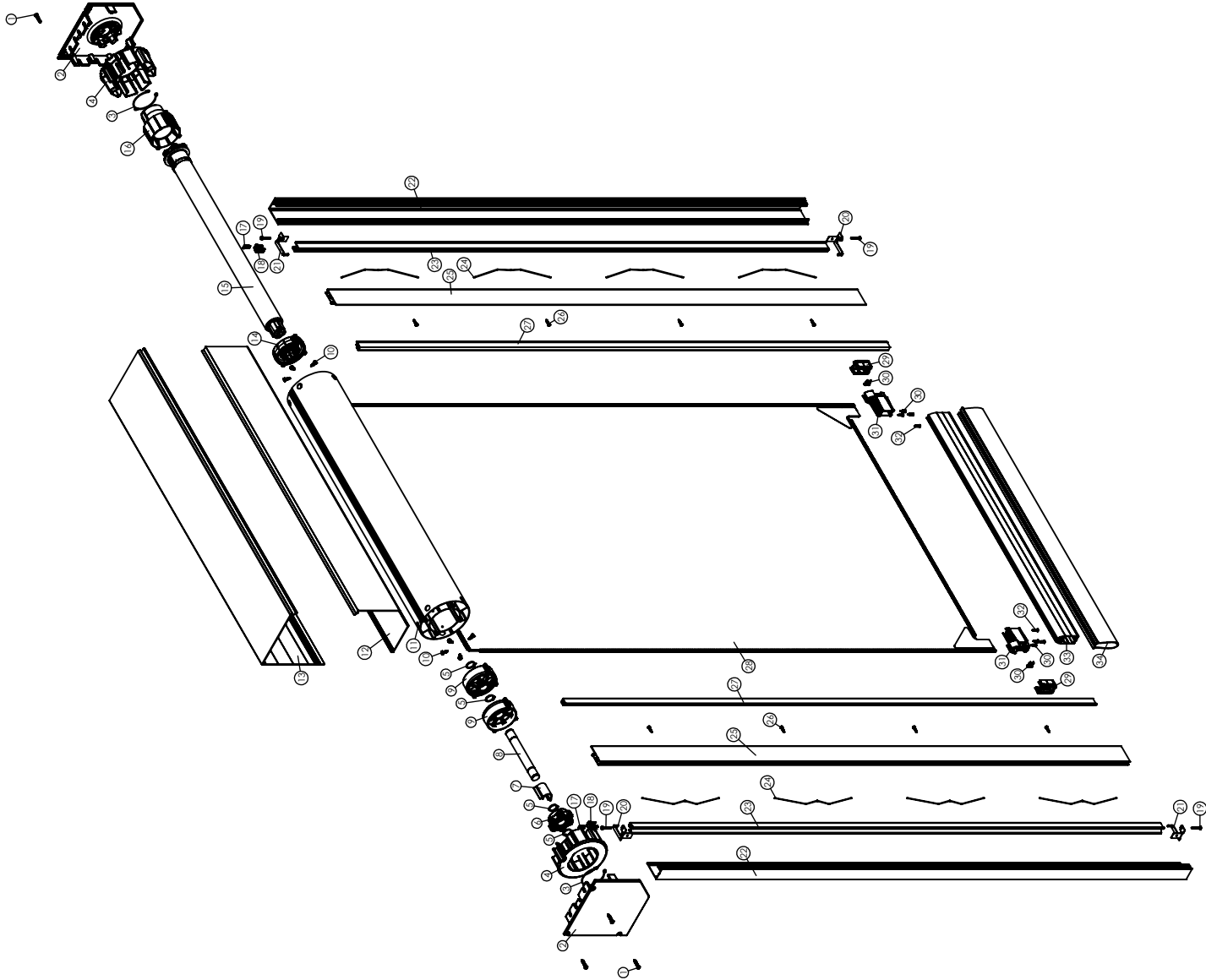
SHEET 1 OF 10

DOCUMENT NO. XXXXX-XX-XXX

B

A


Motorized Retractable Screen
7.125" Housing with Sure Fit Track
Exploded View



SCALE 1:15

B

A

PROPRIETARY AND CONFIDENTIAL													
THE INFORMATION CONTAINED IN THIS DRAWING IS THE SOLE PROPERTY OF PHANTOM SCREENS. REPRODUCTION IN PART OR AS A WHOLE WITHOUT THE WRITTEN PERMISSION OF PHANTOM SCREENS IS PROHIBITED.													
 PHANTOM S C R E E N S	UNLESS OTHERWISE SPECIFIED:		STANDARD TOLERANCES APPLY UNLESS OTHERWISE SPECIFIED			DRAWN		SA	2025-12-01	TITLE: Mz2.0, 7.125 Housing, Sure Fit Track			
			INTERPRET GEOMETRIC TOLERANCING PER: ASME Y14.5 THIRD ANGLE PROJECTION			CHECKED		PP	2025-12-01	SIZE A	DWG. NO. EPN448		REV 3
						ENG APPR.		PP	2025-12-01				
	DIMENSIONS ARE IN INCHES. TOLERANCES: FRACTIONAL ± 1/32 ANGULAR ± 2 TWO PLACE DECIMAL ± .013" THREE PLACE DECIMAL ± .005"			MATERIAL ASSY			MFG APPR.				SCALE: 1:12	WEIGHT:	SHEET 2 OF 10
							Q.A.						

A

B

Motorized Retractable Screen
7.125" Housing with Sure Fit Track
BOM Table

PROPRIETARY AND CONFIDENTIAL

THE INFORMATION CONTAINED IN THIS DRAWING IS THE SOLE PROPERTY OF PHANTOM SCREENS. REPRODUCTION IN PART OR AS A WHOLE WITHOUT THE WRITTEN PERMISSION OF PHANTOM SCREENS IS PROHIBITED.



PHANTOM
SCREENS

UNLESS OTHERWISE SPECIFIED:

DIMENSIONS ARE IN INCHES.
TOLERANCES:
FRACTIONAL ± 1/32
ANGULAR ± 2
TWO PLACE DECIMAL ± .013"
THREE PLACE DECIMAL ± .005"

STANDARD TOLERANCES APPLY
UNLESS OTHERWISE SPECIFIED

INTERPRET GEOMETRIC
TOLERANCING PER: ASME Y14.5
THIRD ANGLE PROJECTION

MATERIAL
ASSY

DRAWN	SA	2025-12-01
CHECKED	PP	2025-12-01
ENG APPR.	PP	2025-12-01
MFG APPR.		
Q.A.		

TITLE: Mz2.0, 7.125 Housing, Sure Fit Track

SIZE A	DWG. NO. EPN448	REV 3
------------------	--------------------	----------

SCALE: 1:12	WEIGHT:	SHEET 3 OF 10
-------------	---------	---------------

NO.	DESCRIPTION	QTY
1	71039 #8-1" Rounded Head Screw (Color matched)	6
2	68220 Mz2.0 End Cap 7.125"	2
3	46009 Mz Retaining Clip	2
4	46611 Mz Leveling Ring 5"	2
5	EPN214 External Retaining Ring	4
6	EPN3 Mz2.0 Pivot Head .75	1
7	EPN211 Mz Pivot Spacer	1
8	EPN7 Mz2.0 Pivot Shaft	1
9	EPN2 Mz2.0 Pivot Bearing	2
10	71021 #8-0.5" Hex Head Drilling Screw	8
11	46006 Mz2.0 Roller Bar 5"	1
12	EPN357 Housing Cover, 7.125"	1
13	EPN47120 Hsg, 1-Pc Back-Top, 7.125"	1
14	EPN4 Mz2.0 Motor Drive Ring	1
15	67235 Somfy Motor, 525A2 Maestria RTS	1
16	EPN5 Mz2.0 Motor Encoder Ring	1
17	EPN314 #1-5/8" Rounded Head Screw	4
18	68155 Sure Fit Entry Guide	2
19	71039 #10-1" Rounded Head Screw (Unfinished)	4
20	46854 Sure Fit Lift Stop Left	2
21	46898 Sure Fit Lift Stop Right	2
22	46909 Sure Fit U-Channel	2
23	46844 Sure Fit Inner Track	2
24	46045 Sure Fit Spring	-
25	47014 Sure Fit U-Channel Side	2
26	EPN312 #6-5/8" Rounded Head Screw	-
27	47024 Sure Fit Cover	2
28	EPN437 Sure Fit Mesh	1
29	EPN161 Slidebar Endcap Cover	2
30	71027 #6-1/2" Rounded Head Screw	8
31	EPN160 Slidebar Endcap Main	2
32	71135 #6-5/8" Flat Head Screw	4
33	EPN199 Slidebar-w-Stopper	1
34	Brush pile or bottom gasket (available in various sizes)	1

A

B

Motorized Retractable Screen
7.125" Housing with Sure Fit Track
Housing and Tracks: Surface Mounted
Tracks Mounted on Side (*)

FRONT SIDE OF
THE UNIT

Space reserved for
slide bar and bottom
seal/brushpile on top,
clear of the opening
for maximum view.

FRONT SIDE OF THE UNIT

Unit Width = Opening Width + 4.22"

Unit Width - 4.22"

#10x1 1/2" Rounded
Head Drilling Screw

Opening Width

Opening Height

Pull = Opening Height + 12.445"

SCALE 1:25

Note:

- Screen unit height can be reduced by cutting the tracks on site.
- Screen unit width is fixed and must be accurate when ordering.

PROPRIETARY AND CONFIDENTIAL

THE INFORMATION CONTAINED IN THIS DRAWING IS THE SOLE PROPERTY OF
PHANTOM SCREENS. REPRODUCTION IN PART OR AS A WHOLE WITHOUT
THE WRITTEN PERMISSION OF PHANTOM SCREENS IS PROHIBITED.



PHANTOM
SCREENS

UNLESS OTHERWISE SPECIFIED:

DIMENSIONS ARE IN INCHES.
TOLERANCES:
FRACTIONAL $\pm 1/32$
ANGULAR ± 2
TWO PLACE DECIMAL $\pm .013$ "
THREE PLACE DECIMAL $\pm .005$ "

STANDARD TOLERANCES APPLY
UNLESS OTHERWISE SPECIFIED

INTERPRET GEOMETRIC
TOLERANCING PER: ASME Y14.5
THIRD ANGLE PROJECTION

MATERIAL

ASSY

DRAWN

SA

2025-12-01

CHECKED

PP

2025-12-01

ENG APPR.

PP

2025-12-01

MFG APPR.

Q.A.

TITLE: Mz2.0, 7.125 Housing, Sure Fit Track

SIZE

A

DWG. NO.

EPN448

REV

3

SCALE: 1:12

WEIGHT:

SHEET 4 OF 10

DOCUMENT NO. XXXXX-XX-XXX

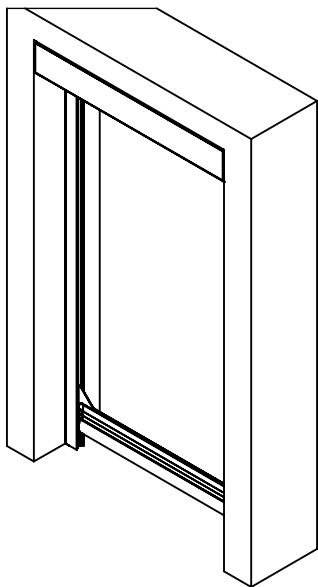
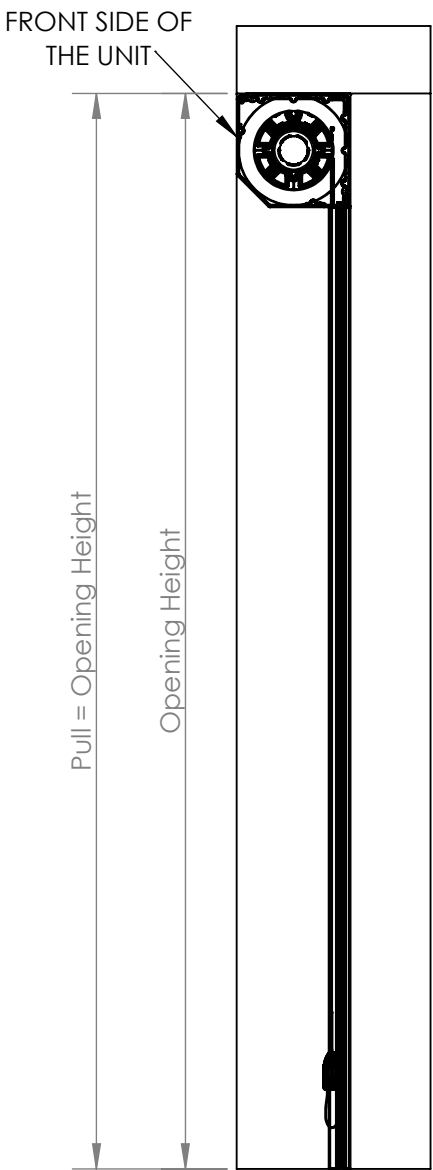
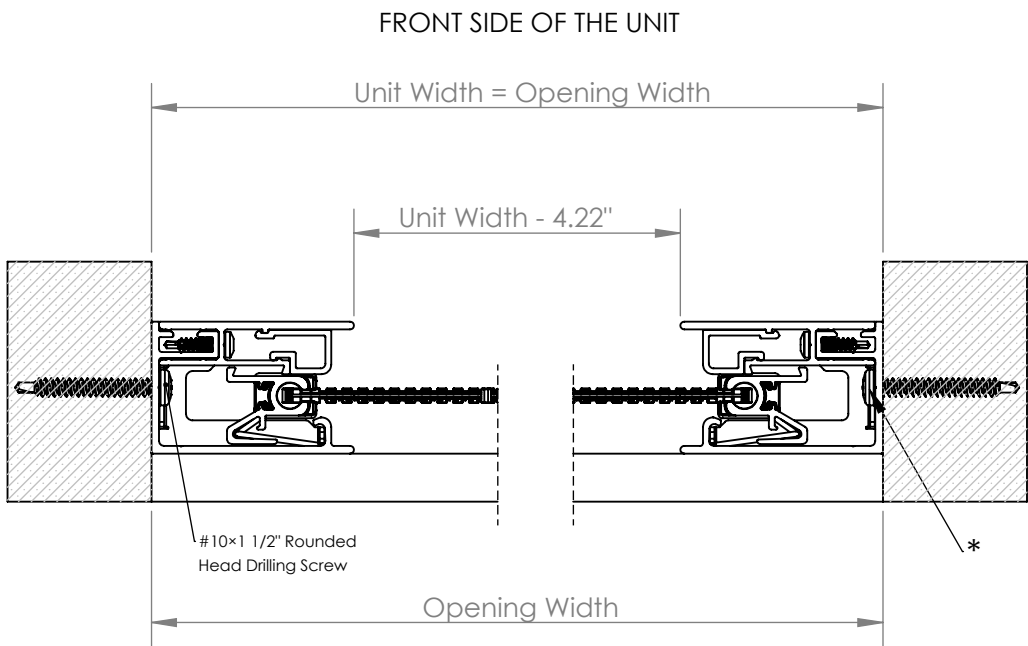
2

1

Motorized Retractable Screen
7.125" Housing with Sure Fit Track
Housing and Tracks: In-Jamb
Tracks Mounted on Back (*)

B

B



SCALE 1:25

Note:

- Screen unit height can be reduced by cutting the tracks on site.
- Screen unit width is fixed and must be accurate when ordering.

A

A

PROPRIETARY AND CONFIDENTIAL											
<div>THE INFORMATION CONTAINED IN THIS DRAWING IS THE SOLE PROPERTY OF PHANTOM SCREENS. REPRODUCTION IN PART OR AS A WHOLE WITHOUT THE WRITTEN PERMISSION OF PHANTOM SCREENS IS PROHIBITED.</div> <div><div><div><div><div></div></div><div><div></div></div></div><div><div></div></div><div><div></div></div></div><div><div></div></div><div><div></div></div></div> <div><div></div></div> <div><div></div></div> <div><div></div></div> <div><div></div></div> <div><div></div></div> <div><div></div></div> <div><div></div></div> <div><div></div></div> <div><div></div></div> <div><div></div></div> <div><div></div></div> <div><div></div></div> <div><div></div></div> <div><div></div></div> <div><div></div></div> <div><div></div></div> <div><div></div></div> <div><div></div></div> <div><div></div></div> <div><div></div></div> <div><div></div></div> <div><div></div></div> <div><div></div></div> <div><div></div></div> <div><div></div></div> <div><div></div></div> <div><div></div></div> <div><div></div></div> <div><div></div></div> <div><div></div></div> <div><div></div></div> <div><div></div></div> <div><div></div></div> <div><div></div></div> <div><div></div></div> <div><div></div></div> <div><div></div></div> <div><div></div></div> <div><div></div></div> <div><div></div></div> <div><div></div></div> <div><div></div></div> <div><div></div></div> <div><div></div></div> <div><div></div></div> <div><div></div></div> <div><div></div></div> <div><div></div></div> <div><div></div></div> <div><div></div></div> <div><div></div></div> <div><div></div></div> <div><div></div></div> <div><div></div></div> <div><div></div></div> <div><div></div></div> <div><div></div></div> <div><div></div></div> <div><div></div></div> <div><div></div></div> <div><div></div></div> <div><div></div></div> <div><div></div></div> <div><div></div></div> <div><div></div></div> <div><div></div></div> <div><div></div></div> <div><div></div></div> <div><div></div></div> <div><div></div></div> <div><div></div></div> <div><div></div></div> <div><div></div></div> <div><div></div></div> <div><div></div></div> <div><div></div></div> <div><div></div></div> <div><div></div></div> <div><div></div></div> <div><div></div></div> <div><div></div></div> <div><div></div></div> <div><div></div></div> <div><div></div></div> <div><div></div></div> <div><div></div></div> <div><div></div></div> <div><div></div></div> <div><div></div></div> <div><div></div></div> <div><div></div></div> <div><div></div></div> <div><div></div></div> <div><div></div></div> <div><div></div></div> <div><div></div></div> <div><div></div></div> <div><div></div></div> <div><div></div></div> <div><div></div></div> <div><div></div></div> <div><div></div></div> <div><div></div></div> <div><div></div></div> <div><div></div></div> <div><div></div></div> <div><div></div></div> <div><div></div></div> <div><div></div></div> <div><div></div></div> <div><div></div></div> <div><div></div></div> <div><div></div></div> <div><div></div></div> <div><div></div></div> <div><div></div></div> <div><div></div></div> <div><div></div></div> <div><div></div></div> <div><div></div></div> <div><div></div></div> <div><div></div></div> <div><div></div></div> <div><div></div></div> <div><div></div></div> <div><div></div></div> <div><div></div></div> <div><div></div></div> <div><div></div></div> <div><div></div></div> <div><div></div></div> <div><div></div></div> <div><div></div></div> <div><div></div></div> <div><div></div></div> <div><div></div></div> <div><div></div></div> <div><div></div></div> <div><div></div></div> <div><div></div></div> <div><div></div></div> <div><div></div></div> <div><div></div></div> <div><div></div></div> <div><div></div></div> <div><div></div></div> <div><div></div></div> <div><div></div></div> <div><div></div></div> <div><div></div></div> <div><div></div></div> <div><div></div></div> <div><div></div></div> <div><div></div></div> <div><div></div></div> <div><div></div></div> <div><div></div></div> <div><div></div></div> <div><div></div></div> <div><div></div></div> <div><div></div></div> <div><div></div></div> <div><div></div></div> <div><div></div></div> <div><div></div></div> <div><div></div></div> <div><div></div></div> <div><div></div></div> <div><div></div></div> <div><div></div></div> <div><div></div></div> <div><div></div></div> <div><div></div></div> <div><div></div></div> <div><div></div></div> <div><div></div></div> <div><div></div></div> <div><div></div></div> <div><div></div></div> <div><div></div></div> <div><div></div></div> <div><div></div></div> <div><div></div></div> <div><div></div></div> <div><div></div></div> <div><div></div></div> <div><div></div></div> <div><div></div></div> <div><div></div></div> <div><div></div></div> <div><div></div></div> <div><div></div></div> <div><div></div></div> <div><div></div></div> <div><div></div></div> <div><div></div></div> <div><div></div></div> <div><div></div></div> <div><div></div></div> <div><div></div></div> <div><div></div></div> <div><div></div></div> <div><div></div></div> <div><div></div></div> <div><div></div></div> <div><div></div></div> <div><div></div></div> <div><div></div></div> <div><div></div></div> <div><div></div></div> <div><div></div></div> <div><div></div></div> <div><div></div></div> <div><div></div></div> <div><div></div></div> <div><div></div></div> <div><div></div></div> <div><div></div></div> <div><div></div></div> <div><div></div></div> <div><div></div></div> <div><div></div></div> <div><div></div></div> <div><div></div></div> <div><div></div></div> <div><div></div></div> <div><div></div></div> <div><div></div></div> <div><div></div></div> <div><div></div></div> <div><div></div></div> <div><div></div></div> <div><div></div></div> <div><div></div></div> <div><div></div></div> <div><div></div></div> <div><div></div></div> <div><div></div></div> <div><div></div></div> <div><div></div></div> <div><div></div></div> <div><div></div></div> <div><div></div></div> <div><div></div></div> <div><div></div></div> <div><div></div></div> <div><div></div></div> <div><div></div></div> <div><div></div></div> <div><div></div></div> <div><div></div></div> <div><div></div></div> <div><div></div></div> <div><div></div></div> <div><div></div></div> <div><div></div></div> <div><div></div></div> <div><div></div></div> <div><div></div></div> <div><div></div></div> <div><div></div></div> <div><div></div></div> <div><div></div></div> <div><div></div></div> <div><div></div></div> <div><div></div></div> <div><div></div></div> <div><div></div></div> <div><div></div></div> <div><div></div></div> <div><div></div></div> <div><div></div></div> <div><div></div></div> <div><div></div></div> <div><div></div></div> <div><div></div></div> <div><div></div></div> <div><div></div></div> <div><div></div></div> <div><div></div></div> <div><div></div></div> <div><div></div></div> <div><div></div></div> <div><div></div></div> <div><div></div></div> <div><div></div></div> <div><div></div></div> <div><div></div></div> <div><div></div></div> <div><div></div></div> <div><div></div></div> <div><div></div></div> <div><div></div></div> <div><div></div></div> <div><div></div></div> <div><div></div></div> <div><div></div></div> <div><div></div></div> <div><div></div></div> <div><div></div></div> <div><div></div></div> <div><div></div></div> <div><div></div></div> <div><div></div></div> <div><div></div></div> <div><div></div></div> <div><div></div></div> <div><div></div></div> <div><div></div></div> <div><div></div></div> <div><div></div></div> <div><div></div></div> <div><div></div></div> <div><div></div></div> <div><div></div></div> <div><div></div></div> <div><div></div></div> <div><div></div></div> <div><div></div></div> <div><div></div></div> <div><div></div></div> <div><div></div></div> <div><div></div></div> <div><div></div></div> <div><div></div></div> <div><div></div></div> <div><div></div></div> <div><div></div></div> <div><div></div></div> <div><div></div></div> <div><div></div></div> <div><div></div></div> <div><div></div></div> <div><div></div></div> <div><div></div></div> <div><div></div></div> <div><div></div></div> <div><div></div></div> <div><div></div></div> <div><div></div></div> <div><div></div></div> <div><div></div></div> <div><div></div></div> <div><div></div></div> <div><div></div></div> <div><div></div></div> <div><div></div></div> <div><div></div></div> <div><div></div></div> <div><div></div></div> <div><div></div></div> <div><div></div></div> <div><div></div></div> <div><div></div></div> <div><div></div></div> <div><div></div></div> <div><div></div></div> <div><div></div></div> <div><div></div></div> <div><div></div></div> <div><div></div></div> <div><div></div></div> <div><div></div></div> <div><div></div></div> <div><div></div></div> <div><div></div></div> <div><div></div></div> <div><div></div></div> <div><div></div></div> <div><div></div></div> <div><div></div></div> <div><div></div></div> <div><div></div></div> <div><div></div></div> <div><div></div></div> <div><div></div></div> <div><div></div></div> <div><div></div></div> <div><div></div></div> <div><div></div></div> <div><div></div></div> <div><div></div></div> <div><div></div></div> <div><div></div></div> <div><div></div></div> <div><div></div></div> <div><div></div></div> <div><div></div></div> <div><div></div></div> <div><div></div></div> <div><div></div></div> <div><div></div></div> <div><div></div></div> <div><div></div></div> <div><div></div></div> <div><div></div></div> <div><div></div></div> <div><div></div></div> <div><div></div></div> <div><div></div></div> <div><div></div></div> <div><div></div></div> <div><div></div></div> <div><div></div></div> <div><div></div></div> <div><div></div></div> <div><div></div></div> <div><div></div></div> <div><div></div></div> <div><div></div></div> <div><div></div></div> <div><div></div></div> <div><div></div></div> <div><div></div></div> <div><div></div></div> <div><div></div></div> <div><div></div></div> <div><div></div></div> <div><div></div></div> <div><div></div></div> <div><div></div></div> <div><div></div></div> <div><div></div></div> <div><div></div></div> <div><div></div></div> <div><div></div></div> <div><div></div></div> <div><div></div></div> <div><div></div></div> <div><div></div></div> <div><div></div></div> <div><div></div></div> <div><div></div></div> <div><div></div></div> <div><div></div></div> <div><div></div></div> <div><div></div></div> <div><div></div></div> <div><div></div></div> <div><div></div></div> <div><div></div></div> <div><div></div></div> <div><div></div></div> <div><div></div></div> <div><div></div></div> <div><div></div></div> <div><div></div></div> <div><div></div></div> <div><div></div></div> <div><div></div></div> <div><div></div></div> <div><div></div></div> <div><div></div></div> <div><div></div></div> <div><div></div></div> <div><div></div></div> <div><div></div></div> <div><div></div></div> <div><div></div></div> <div><div></div></div> <div><div></div></div> <div><div></div></div> <div><div></div></div> <div><div></div></div> <div><div></div></div> <div><div></div></div> <div><div></div></div> <div><div></div></div> <div><div></div></div> <div><div></div></div> <div><div></div></div> <div><div></div></div> <div><div></div></div> <div><</div>											

2

1

2

1

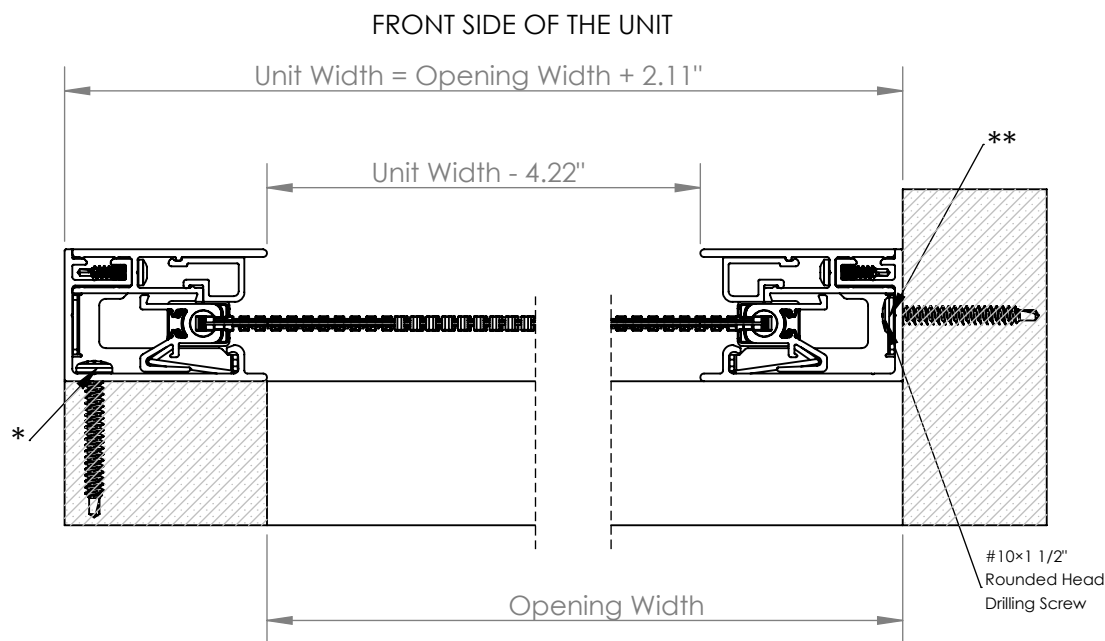
Motorized Retractable Screen

7.125" Housing with Sure Fit Track

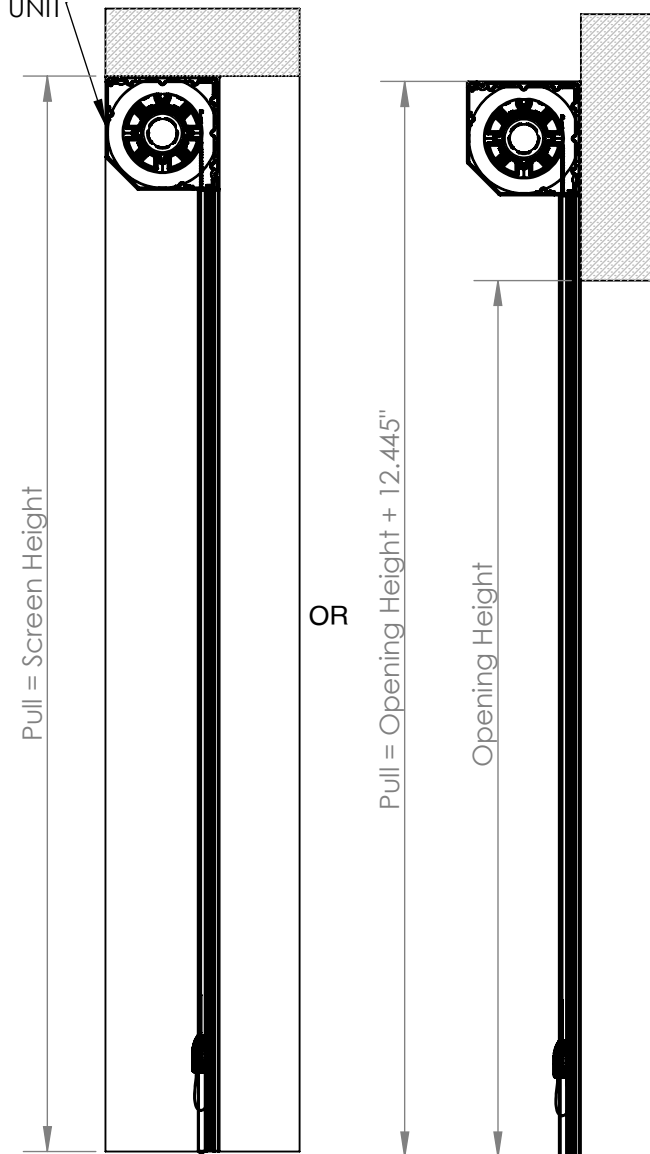
Housing and Tracks: In-Jamb and Surface Mounted (Mixed)

One Track Mounted on Side (*), One on Back (**)

B



FRONT SIDE OF THE UNIT



B

A

Note:

- Screen unit height can be reduced by cutting the tracks on site.
- Screen unit width is fixed and must be accurate when ordering.

A

PROPRIETARY AND CONFIDENTIAL

THE INFORMATION CONTAINED IN THIS DRAWING IS THE SOLE PROPERTY OF PHANTOM SCREENS. REPRODUCTION IN PART OR AS A WHOLE WITHOUT THE WRITTEN PERMISSION OF PHANTOM SCREENS IS PROHIBITED.



UNLESS OTHERWISE SPECIFIED:

DIMENSIONS ARE IN INCHES.
TOLERANCES:
FRACTIONAL $\pm 1/32$
ANGULAR ± 2
TWO PLACE DECIMAL $\pm .013$
THREE PLACE DECIMAL $\pm .005$

STANDARD TOLERANCES APPLY UNLESS OTHERWISE SPECIFIED

INTERPRET GEOMETRIC TOLERANCING PER: ASME Y14.5
THIRD ANGLE PROJECTION

MATERIAL

ASSY

DRAWN

SA

2025-12-01

CHECKED

PP

2025-12-01

ENG APPR.

PP

2025-12-01

MFG APPR.

Q.A.

TITLE: Mz2.0, 7.125 Housing, Sure Fit Track

SIZE

A

DWG. NO.

EPN448

REV

3

SCALE: 1:12

WEIGHT:

SHEET 6 OF 10

2

1

DOCUMENT NO. XXXXX-XX-XXX

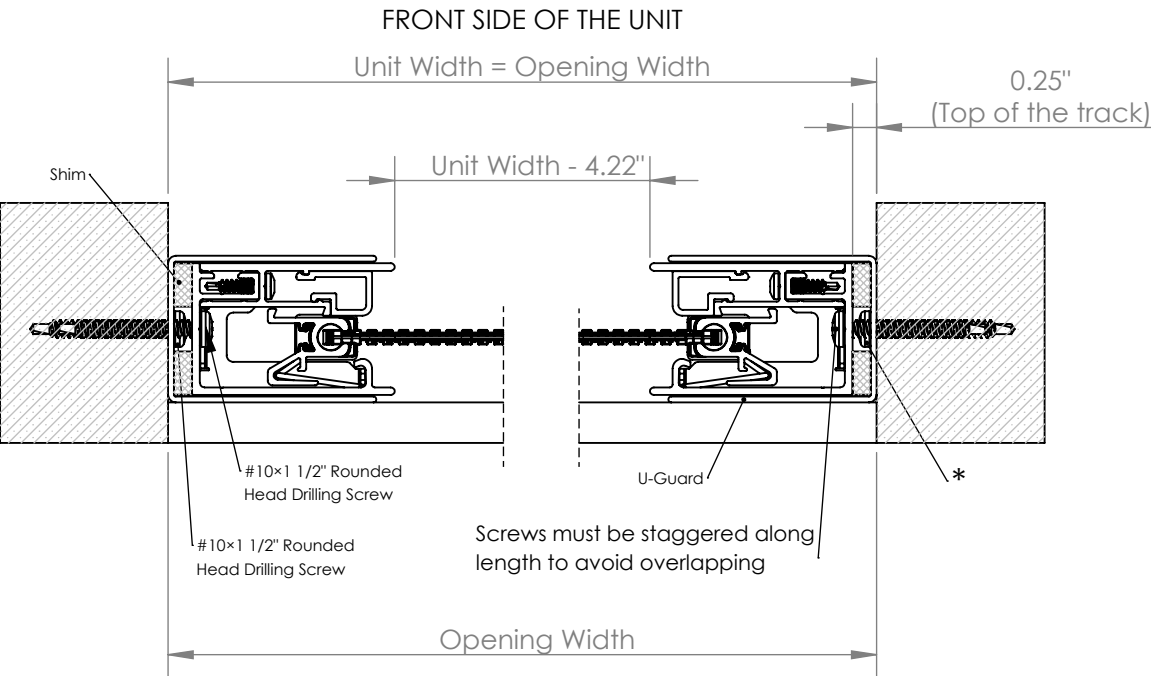
Motorized Retractable Screen

7.125" Housing with Sure Fit Track

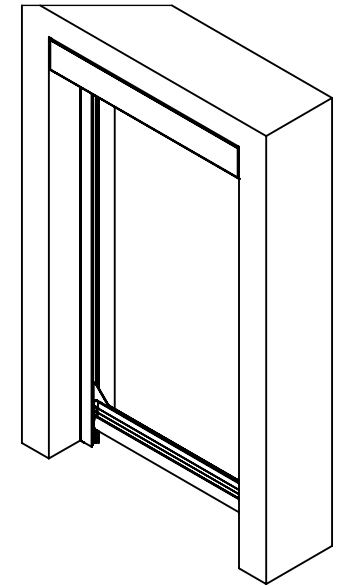
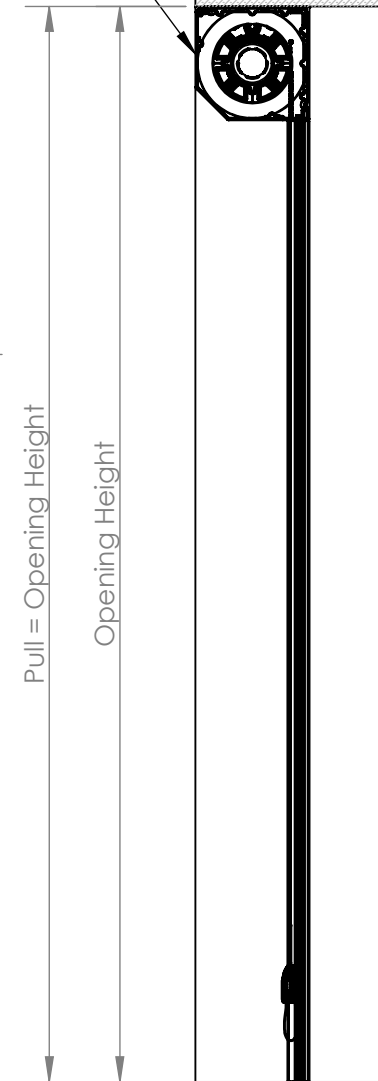
Housing and Tracks: In-Jamb

U-Guard Used for Adjustment on Unparallel Posts

Tracks Mounted on Back (*)



FRONT SIDE OF THE UNIT



Note:

- Screen unit height can be reduced by cutting the tracks on site.
- Screen unit width is fixed and must be accurate when ordering.

PROPRIETARY AND CONFIDENTIAL

THE INFORMATION CONTAINED IN THIS DRAWING IS THE SOLE PROPERTY OF PHANTOM SCREENS. REPRODUCTION IN PART OR AS A WHOLE WITHOUT THE WRITTEN PERMISSION OF PHANTOM SCREENS IS PROHIBITED.



PHANTOM
SCREENS

UNLESS OTHERWISE SPECIFIED:

DIMENSIONS ARE IN INCHES.
TOLERANCES:
FRACTIONAL $\pm 1/32$
ANGULAR ± 2
TWO PLACE DECIMAL $\pm .013$
THREE PLACE DECIMAL $\pm .005$

STANDARD TOLERANCES APPLY UNLESS OTHERWISE SPECIFIED

INTERPRET GEOMETRIC TOLERANCING PER: ASME Y14.5
THIRD ANGLE PROJECTION

MATERIAL

ASSY

DRAWN

SA

2025-12-01

CHECKED

PP

2025-12-01

ENG APPR.

PP

2025-12-01

MFG APPR.

Q.A.

TITLE: Mz2.0, 7.125 Housing, Sure Fit Track

SIZE

A

DWG. NO.

EPN448

REV

3

SCALE: 1:12

WEIGHT:

SHEET 7 OF 10

DOCUMENT NO. XXXXX-XX-XXX

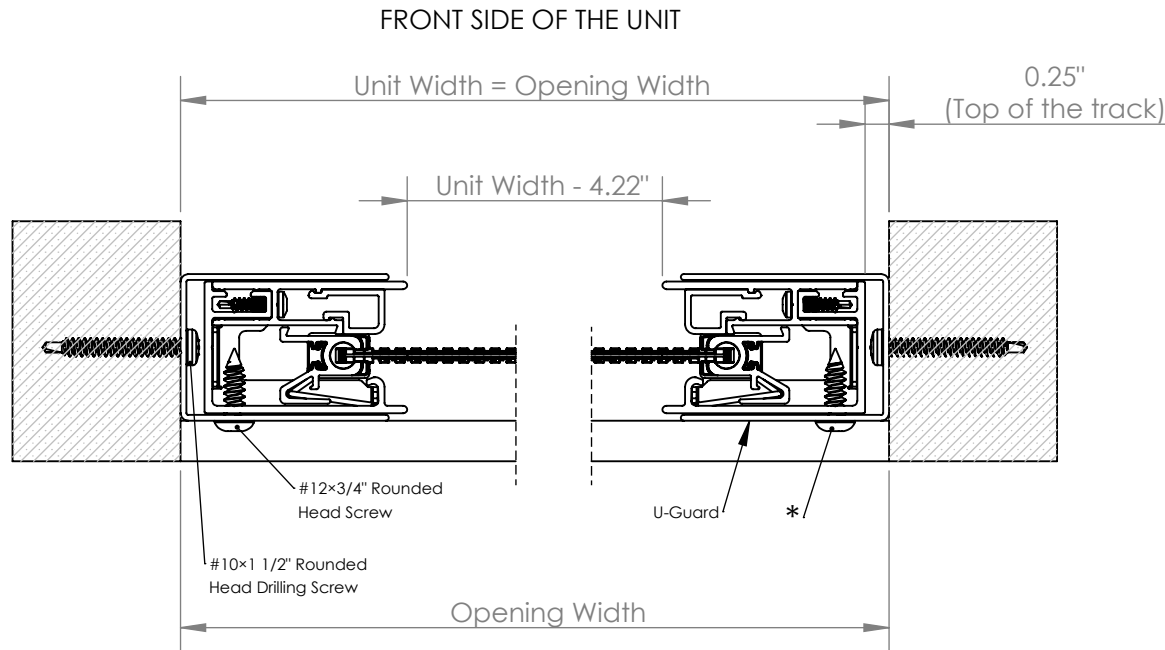
Motorized Retractable Screen

7.125" Housing with Sure Fit Track

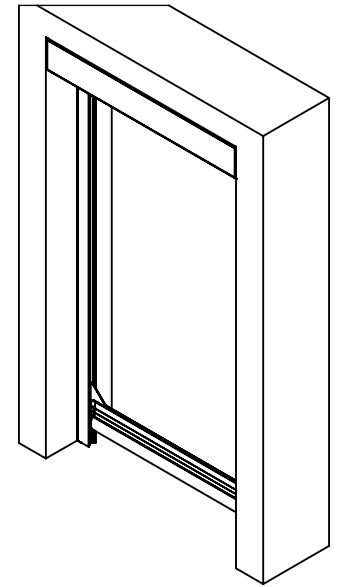
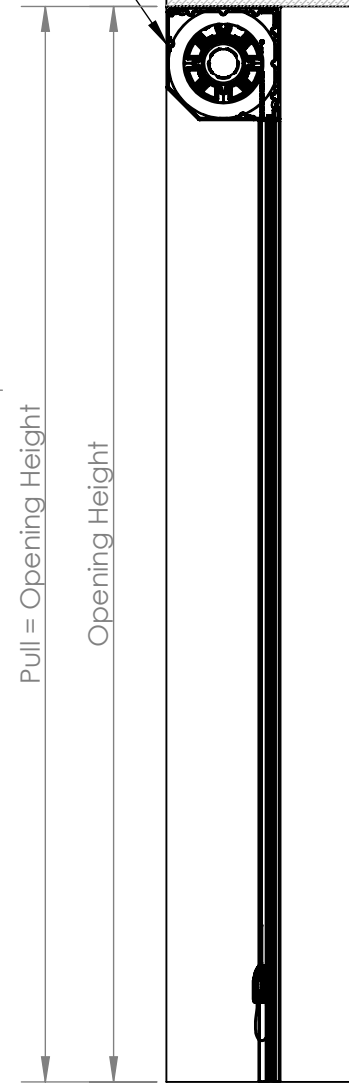
Housing and Tracks: In-Jamb

U-Guard Used for Adjustment on Unparallel Posts

Tracks Mounted on Side (*)



FRONT SIDE OF THE UNIT



SCALE 1:25

Note:

- Screen unit height can be reduced by cutting the tracks on site.
- Screen unit width is fixed and must be accurate when ordering.

PROPRIETARY AND CONFIDENTIAL

THE INFORMATION CONTAINED IN THIS DRAWING IS THE SOLE PROPERTY OF PHANTOM SCREENS. REPRODUCTION IN PART OR AS A WHOLE WITHOUT THE WRITTEN PERMISSION OF PHANTOM SCREENS IS PROHIBITED.



PHANTOM
SCREENS

UNLESS OTHERWISE SPECIFIED:

DIMENSIONS ARE IN INCHES.
TOLERANCES:
FRACTIONAL $\pm 1/32$
ANGULAR ± 2
TWO PLACE DECIMAL $\pm .013$
THREE PLACE DECIMAL $\pm .005$

STANDARD TOLERANCES APPLY UNLESS OTHERWISE SPECIFIED

INTERPRET GEOMETRIC TOLERANCING PER: ASME Y14.5
THIRD ANGLE PROJECTION

MATERIAL

ASSY

DRAWN

CHECKED

ENG APPR.

MFG APPR.

Q.A.

SA

PP

PP

2025-12-01

2025-12-01

2025-12-01

TITLE: Mz2.0, 7.125 Housing, Sure Fit Track

SIZE

A

DWG. NO.

EPN448

REV

3

SCALE: 1:12

WEIGHT:

SHEET 8 OF 10

DOCUMENT NO. XXXXX-XX-XXX

Motorized Retractable Screen

7.125" Housing with Sure Fit Track

Housing and Tracks: In-Jamb

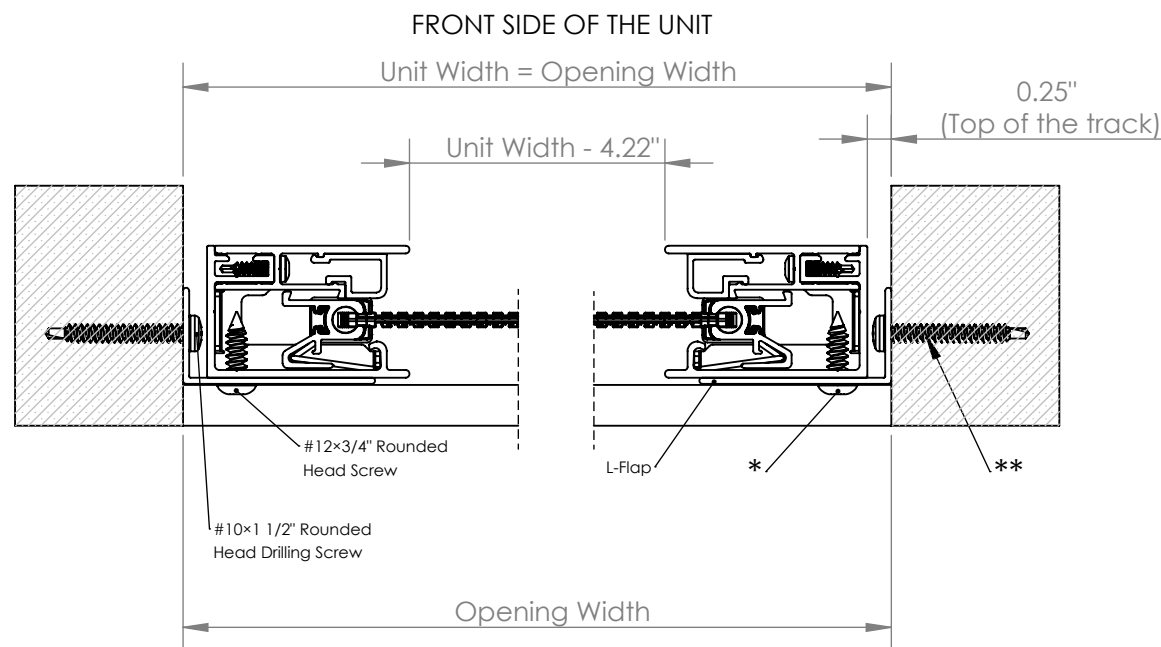
L-Flap Used for Adjustment on Unparallel Posts

Tracks Mounted on Side (*)

L-Flap Mounted behind the Track (**)

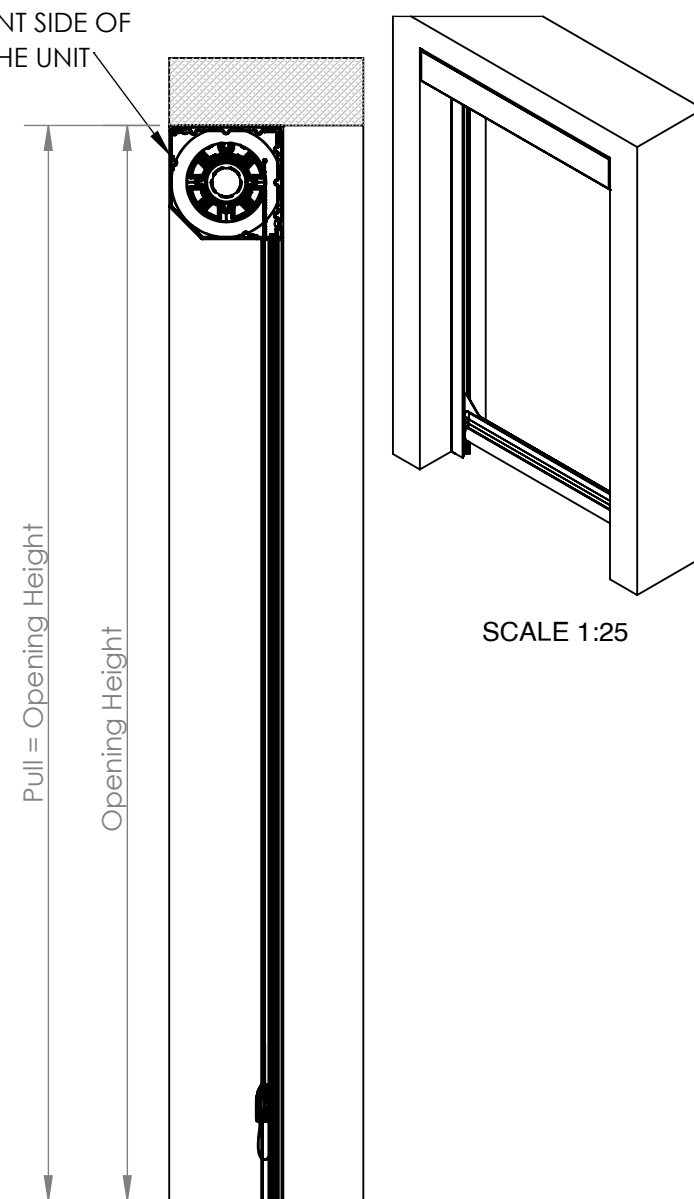
B

B



Note:

- Screen unit height can be reduced by cutting the tracks on site.
- Screen unit width is fixed and must be accurate when ordering.



A

PROPRIETARY AND CONFIDENTIAL

THE INFORMATION CONTAINED IN THIS DRAWING IS THE SOLE PROPERTY OF PHANTOM SCREENS. REPRODUCTION IN PART OR AS A WHOLE WITHOUT THE WRITTEN PERMISSION OF PHANTOM SCREENS IS PROHIBITED.



UNLESS OTHERWISE SPECIFIED:

DIMENSIONS ARE IN INCHES.
TOLERANCES:
FRACTIONAL $\pm 1/32$
ANGULAR ± 2
TWO PLACE DECIMAL $\pm .013$
THREE PLACE DECIMAL $\pm .005$

STANDARD TOLERANCES APPLY UNLESS OTHERWISE SPECIFIED

INTERPRET GEOMETRIC TOLERANCING PER: ASME Y14.5
THIRD ANGLE PROJECTION

MATERIAL

ASSY

DRAWN

SA

2025-12-01

CHECKED

PP

2025-12-01

ENG APPR.

PP

2025-12-01

MFG APPR.

Q.A.

TITLE: Mz2.0, 7.125 Housing, Sure Fit Track

SIZE

A

DWG. NO.

EPN448

REV

3

SCALE: 1:12

WEIGHT:

SHEET 9 OF 10

Motorized Retractable Screen

7.125" Housing with Sure Fit Track

Housing and Tracks: In-Jamb

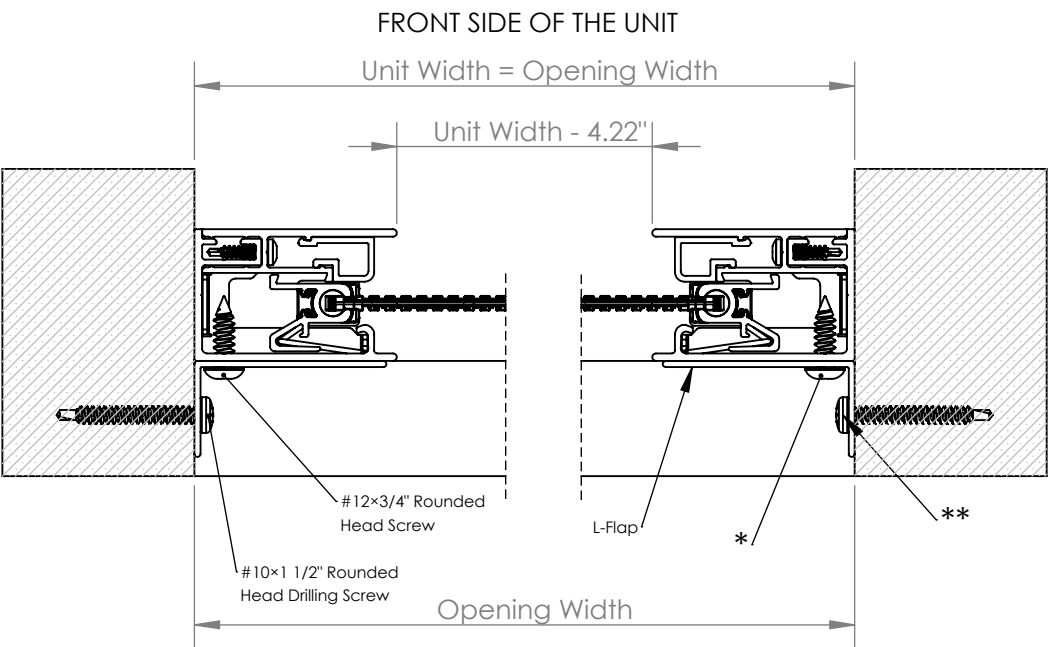
L-Flap Used for Adjustment on Unparallel Posts

Tracks Mounted on Side (*)

L-Flap Mounted on the Side of the Track (**)

B

B

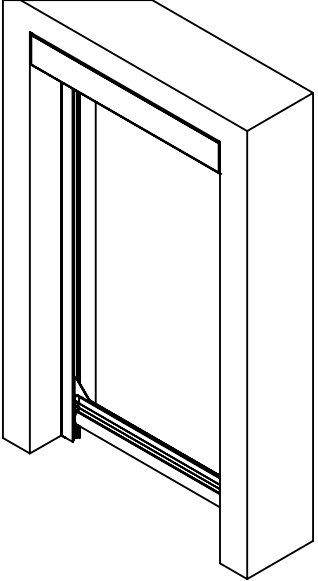
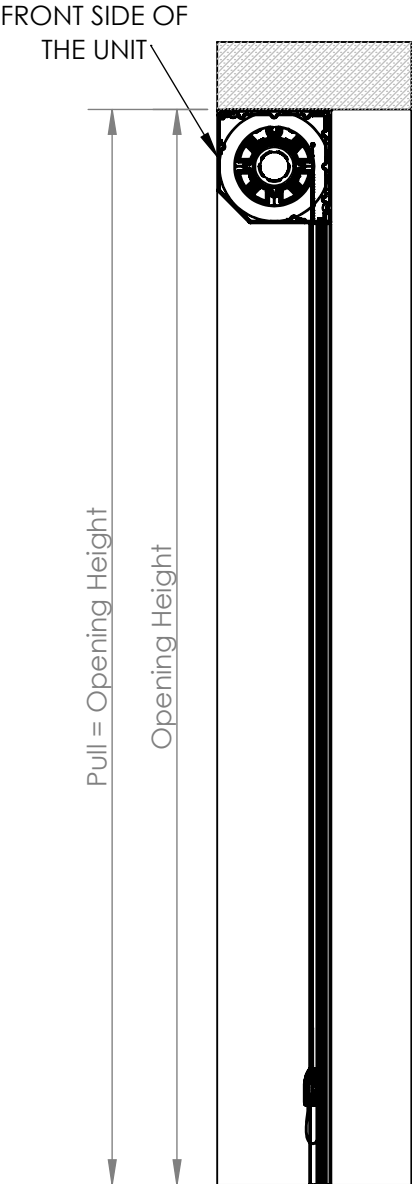



Note:

- Screen unit height can be reduced by cutting the tracks on site.
- Screen unit width is fixed and must be accurate when ordering.

A

A



PROPRIETARY AND CONFIDENTIAL												
<div></div> <div>PHANTOM SCREENS</div>		UNLESS OTHERWISE SPECIFIED: DIMENSIONS ARE IN INCHES. TOLERANCES: FRACTIONAL ± 1/32 ANGULAR ± 2 TWO PLACE DECIMAL ± .013" THREE PLACE DECIMAL ± .005"		STANDARD TOLERANCES APPLY UNLESS OTHERWISE SPECIFIED INTERPRET GEOMETRIC TOLERANCING PER: ASME Y14.5 THIRD ANGLE PROJECTION MATERIAL ASSY		DRAWN	SA	2025-12-01	TITLE: Mz2.0, 7.125 Housing, Sure Fit Track			
						CHECKED	PP	2025-12-01	SIZE	DWG. NO.		REV
						ENG APPR.	PP	2025-12-01	A	EPN448		3
						MFG APPR.						
						Q.A.			SCALE: 1:12	WEIGHT:		SHEET 10 OF 10